

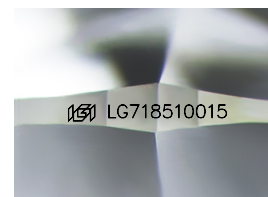
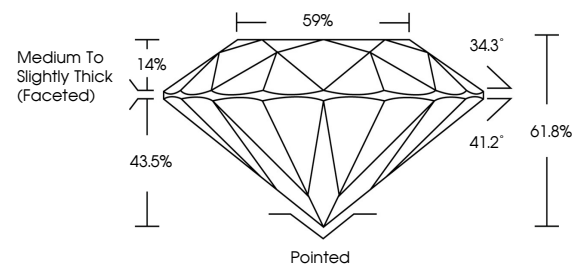


ELECTRONIC COPY

LABORATORY GROWN DIAMOND REPORT

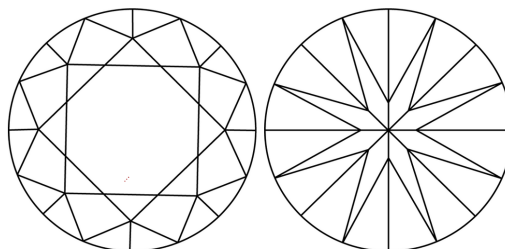
LG718510015
Report verification at igi.org

PROPORTIONS



Sample Image Used

CLARITY CHARACTERISTICS



KEY TO SYMBOLS

Red symbols indicate internal characteristics.
Green symbols indicate external characteristics.

COLOR

D E F G H I J Faint Very Light Light

CLARITY

IF WS¹⁻² VS¹⁻² SI¹⁻² |¹⁻³

Internally Flawless	Very Very Slightly Included	Very Slightly Included	Slightly Included	Included
------------------------	--------------------------------	---------------------------	----------------------	----------



July 1, 2025

IGI Report Number **LG718510015**Description **LABORATORY GROWN DIAMOND**Shape and Cutting Style **ROUND BRILLIANT**

Measurements 6.75 - 6.79 X 4.18 MM

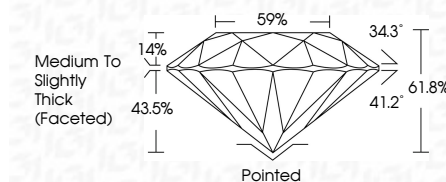
GRADING RESULTS

Carat Weight **1.18 CARAT**

Color Grade D

Clarity Grade VVS 2

Cut Grade **IDEAL**



ADDITIONAL GRADING INFORMATION

Polish **EXCELLENT**Symmetry **EXCELLENT**Fluorescence **NONE**Inscription(s) LG718510015

Comments: This Laboratory Grown Diamond was created by Chemical Vapor Deposition (CVD) growth process.
Type IIa



© IGI 2020, International Gemological Institute

FD - 10 20



THIS DOCUMENT WAS PRODUCED WITH THE FOLLOWING SECURITY MEASURES: SPECIAL DOCUMENT PAPER, INK SCREENS, WATERMARK, BACKGROUND DESIGNS, HOLOGRAM AND OTHER SECURITY FEATURES NOT LISTED AND DO EXCEED DOCUMENT SECURITY INDUSTRY GUIDELINES

www.igi.org

JULY 1, 2025 GI Report No. LG718510015 ROUND BRILLANT	1.18 CARAT D VVS 2 IDEAL 61.5% 59% Medium to Slightly Thick (Faceted)	Polished EXCELLENT EXCELLENT NONE #69 LG718510015	Comments: This is a Fancy Crown Diamond was created by Chemical Vapor Deposition (CVD) growth process. Type IIa
---	--	---	---