

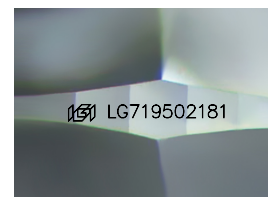
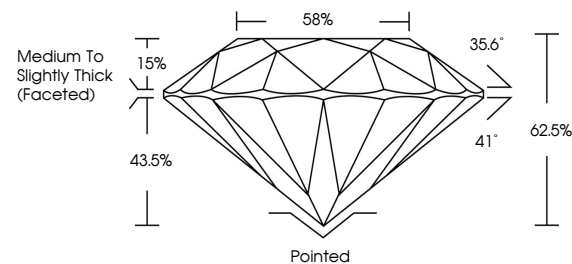


ELECTRONIC COPY

LABORATORY GROWN DIAMOND REPORT

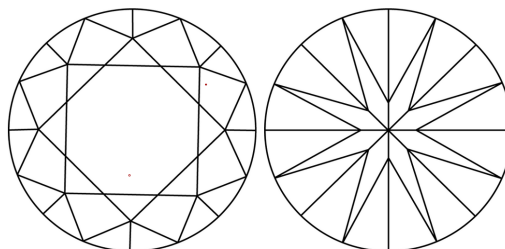
LG719502181
Report verification at igi.org

PROPORTIONS



Sample Image Used

CLARITY CHARACTERISTICS



KEY TO SYMBOLS

Red symbols indicate internal characteristics.
Green symbols indicate external characteristics.

COLOR

D E F G H I J Faint Very Light Light

CLARITY

IF WS¹⁻² VS¹⁻² SI¹⁻² |¹⁻³

Internally Flawless	Very Very Slightly Included	Very Slightly Included	Slightly Included	Included
------------------------	--------------------------------	---------------------------	----------------------	----------

LABORATORY GROWN DIAMOND REPORT



July 9, 2025

IGI Report Number **LG719502181**Description **LABORATORY GROWN DIAMOND**Shape and Cutting Style **ROUND BRILLIANT**

Measurements	10.20 - 10.24 X 6.38 MM
--------------	-------------------------

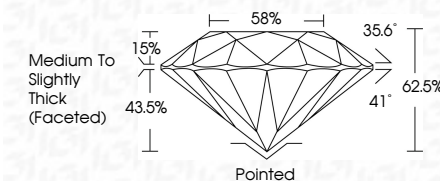
GRADING RESULTS

Carat Weight **4.16 CARATS**

Color Grade E

Clarity Grade VS 1

Cut Grade **IDEAL**



ADDITIONAL GRADING INFORMATION

Polish **EXCELLENT**Symmetry **EXCELLENT**Fluorescence **NONE**Inscription(s)  LG719502181

Comments: This Laboratory Grown Diamond was created by Chemical Vapor Deposition (CVD) growth process.
Type IIa



© IGI 2020, International Gemological Institute

FD - 10 20

www.igi.org

THIS DOCUMENT WAS PRODUCED WITH THE FOLLOWING SECURITY MEASURES: SPECIAL DOCUMENT PAPER, INK SCREENS, WATERMARK BACKGROUND DESIGNS, HOLOGRAM AND OTHER SECURITY FEATURES NOT LISTED AND DO EXCEED DOCUMENT SECURITY INDUSTRY GUIDELINES

July 9, 2025	416 CARATS	Polished	Comments: The Laboratory Grown Diamond was found to be a natural vapor deposition (CVD) growth process. Type IIa
GI Report No. LG71902181	E VS 1	EXCELLENT	
ROUND BRILLIANT	IDEAL	EXCELLENT	
10.20 × 10.24 × 6.38 MM	62.5%	59%	
	Medium to Slightly Thick (Faceted)	None	
		169 LG71902181	