

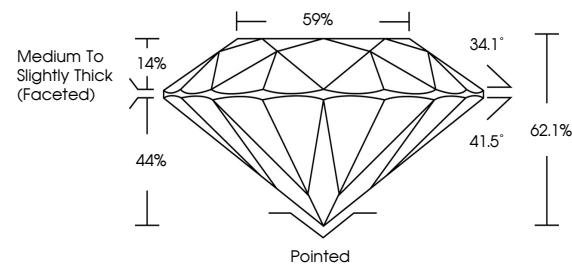


ELECTRONIC COPY

LABORATORY GROWN DIAMOND REPORT

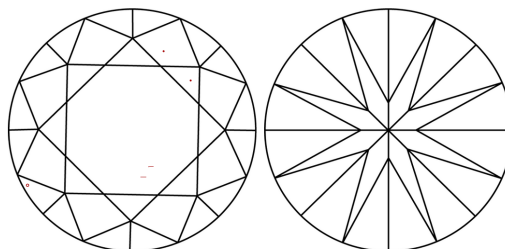
LG719517905
Report verification at igi.org

PROPORTIONS



Sample Image Used

CLARITY CHARACTERISTICS



KEY TO SYMBOLS

Red symbols indicate internal characteristics.
Green symbols indicate external characteristics.

COLOR

D E F G H I J Faint Very Light Light

CLARITY

IF WS¹⁻² VS¹⁻² SI¹⁻² |¹⁻³

Internally Flawless	Very Very Slightly Included	Very Slightly Included	Slightly Included	Included
------------------------	--------------------------------	---------------------------	----------------------	----------

LABORATORY GROWN DIAMOND REPORT



June 26, 2025

IGI Report Number **LG719517905**Description **LABORATORY GROWN DIAMOND**Shape and Cutting Style **ROUND BRILLIANT**

Measurements 7.96 - 8.01 X 4.96 MM

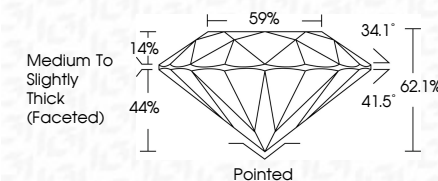
GRADING RESULTS

Carat Weight **1.96 CARAT**

Color Grade E

Clarity Grade VS 1

Cut Grade **IDEAL**



ADDITIONAL GRADING INFORMATION

Polish **EXCELLENT**Symmetry **EXCELLENT**Fluorescence **NONE**Inscription(s) LG719517905

Comments: This Laboratory Grown Diamond was created by Chemical Vapor Deposition (CVD) growth process.
Type IIa



IG



© IGI 2020, International Gemological Institute

FD - 10 20

www.igi.org

THIS DOCUMENT WAS PRODUCED WITH THE FOLLOWING SECURITY MEASURES: SPECIAL DOCUMENT PAPER, INK SCREENS, WATERMARK BACKGROUND DESIGNS, HOLOGRAM AND OTHER SECURITY FEATURES NOT LISTED AND DO EXCEED DOCUMENT SECURITY INDUSTRY GUIDELINES

June 26, 2025
IGI Report No LG719517905
ROUND BRILLIANT

1.96 - 8.01 X 4.96 MM	VS1	Pointed	EXCELLENT	None	46015710517005
Carat Weight	IDEAL	EXCELLENT	EXCELLENT		
Color Grade	62.1%	Medium to Slightly Thick Faceted			
Clarity Grade	59%				
Cut Grade					
Depth					
Table					
Girdle					
Culet					
Polish					
Symmetry					
Fluorescence					
Comments					

Comments:
This Laboratory Grown Diamond was created by Chemical Vapor Deposition (CVD) growth process.