



ELECTRONIC COPY

LABORATORY GROWN DIAMOND REPORT

July 17, 2025	
IGI Report Number	LG719519517
Description	LABORATORY GROWN DIAMOND
Shape and Cutting Style	ROUND BRILLIANT
Measurements	9.83 - 9.87 X 5.88 MM
GRADING RESULTS	
Carat Weight	3.44 CARATS
Color Grade	E
Clarity Grade	VVS 2
Cut Grade	IDEAL

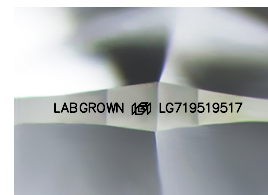
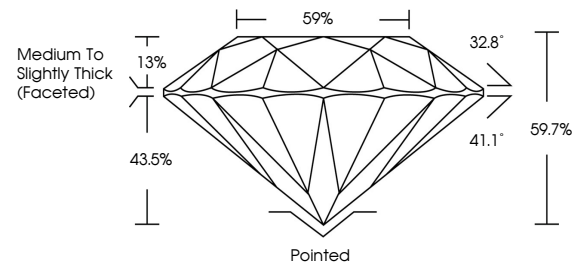
ADDITIONAL GRADING INFORMATION

Polish	EXCELLENT
Symmetry	EXCELLENT
Fluorescence	NONE
Inscription(s)	LABGROWN 16 LG719519517

Comments: This Laboratory Grown Diamond was created by Chemical Vapor Deposition (CVD) growth process.
Type IIa

LG719519517
Report verification at igi.org

PROPORTIONS



Sample Image Used

COLOR

D E F G H I J Faint Very Light Light

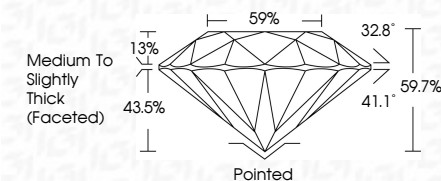
CLARITY

IF	VS ¹⁻²	VS ¹⁻²	SI ¹⁻²	I ¹⁻³
Internally Flawless	Very Very Slightly Included	Very Slightly Included	Slightly Included	Included

LABORATORY GROWN DIAMOND REPORT



July 17, 2025	
IGI Report Number	LG719519517
Description	LABORATORY GROWN DIAMOND
Shape and Cutting Style	ROUND BRILLIANT
Measurements	9.83 - 9.87 X 5.88 MM
GRADING RESULTS	
Carat Weight	3.44 CARATS
Color Grade	E
Clarity Grade	VVS 2
Cut Grade	IDEAL



ADDITIONAL GRADING INFORMATION

Polish	EXCELLENT
Symmetry	EXCELLENT
Fluorescence	NONE
Inscription(s)	LABGROWN (IGI) LG719519517
Comments: This Laboratory Grown Diamond was created by Chemical Vapor Deposition (CVD) growth process.	
Type IIa	



IG



© IGI 2020, International Gemological Institute

FD - 10 20

www.igi.org



THIS DOCUMENT WAS PRODUCED WITH THE FOLLOWING SECURITY MEASURES: SPECIAL DOCUMENT PAPER, INK SCREENS, WATERMARK, BACKGROUND DESIGNS, HOLOGRAM AND OTHER SECURITY FEATURES NOT LISTED AND DO EXCEED DOCUMENT SECURITY INDUSTRY GUIDELINES

July 17, 2025
IGI Report No. IGI19519517

IGI Report No. G571 195167	3.44 CARATS
9.88 - 9.87 X 5.88 MM	VVS 2
Carat Weight	IDEAL
Color Grade	56/75
Clarity Grade	59%
Cut Grade	Medium to Slightly Thick (Fasted)
Depth	Polished
Table	EXCELLENT
Girdle	EXCELLENT
Culet	NONE
Polish	LARGEROWN 69
Symmetry	G57195167
Fluorescence	
Inscriptions	
Comments:	
	The Laboratory Grown Diamond was created by Chemical Vapor Deposition (CVD) growth process.

Comments:
This Laboratory Grown Diamond was created by Chemical Vapor Deposition (CVD) growth process.