



ELECTRONIC COPY

LABORATORY GROWN DIAMOND REPORT

July 18, 2025	
IGI Report Number	LG719520119
Description	LABORATORY GROWN DIAMOND
Shape and Cutting Style	ROUND BRILLIANT
Measurements	9.75 - 9.80 X 6.03 MM
GRADING RESULTS	
Carat Weight	3.55 CARATS
Color Grade	E
Clarity Grade	VVS 2
Cut Grade	IDEAL

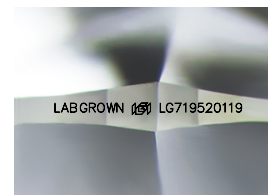
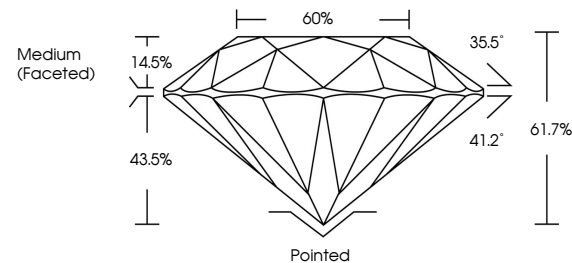
ADDITIONAL GRADING INFORMATION

Polish	EXCELLENT
Symmetry	EXCELLENT
Fluorescence	NONE
Inscription(s)	LABGROWN 16 LG719520119

Comments: This Laboratory Grown Diamond was created by Chemical Vapor Deposition (CVD) growth process.
Type IIa

LG719520119
Report verification at igi.org

PROPORTIONS



Sample Image Used

COLOR

D E F G H I J Faint Very Light Light

CLARITY

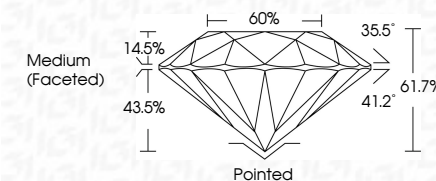
IF WS¹⁻² VS¹⁻² SI¹⁻² |¹⁻³

Internally Flawless	Very Very Slightly Included	Very Slightly Included	Slightly Included	Included
------------------------	--------------------------------	---------------------------	----------------------	----------

LABORATORY GROWN DIAMOND REPORT



July 18, 2025	
IGI Report Number	LG719520119
Description	LABORATORY GROWN DIAMOND
Shape and Cutting Style	ROUND BRILLIANT
Measurements	9.75 - 9.80 X 6.03 MM
GRADING RESULTS	
Carat Weight	3.55 CARATS
Color Grade	E
Clarity Grade	VVS 2
Cut Grade	IDEAL



ADDITIONAL GRADING INFORMATION

Polish	EXCELLENT
Symmetry	EXCELLENT
Fluorescence	NONE
Inscription(s)	LABGROWN (IGI) LG719520119
Comments: This Laboratory Grown Diamond was created by Chemical Vapor Deposition (CVD) growth process.	
Type IIa	



© IGI 2020, International Gemological Institute

FD - 10 20

www.igi.org



THIS DOCUMENT WAS PRODUCED WITH THE FOLLOWING SECURITY MEASURES: SPECIAL DOCUMENT PAPER, INK SCREENS, WATERMARK, BACKGROUND DESIGNS, HOLOGRAM AND OTHER SECURITY FEATURES NOT LISTED AND DO EXCEED DOCUMENT SECURITY INDUSTRY GUIDELINE

July 18, 2025
GI Report No LG719520119
ROUND BRILLIANT

2.75 - 9.80 X 6.03 MM

Carat Weight 3.55 CARATS

Color Grade E

Clarity Grade	WS 2
FL	
IF	
VVS	
VS	
SI	
I	
P	

Cut Grade	IDEAL
Depth	61.7%

Table	60%
-------	-----

Girdle

Culet	Pointed
-------	---------

Polish	EXCELLENT
Czech	POOR

Symmetry	EXCELLENT
Clarity	NONE

Fluorescence	LABGROWN 157	NONE
Inscription(s)		

Comments:

Comments:
This Laboratory Grown Diamond was
created by: Chemical Vapor Deposition

created by Chemical Vapor Deposition (CVD) growth process.

type IIa