

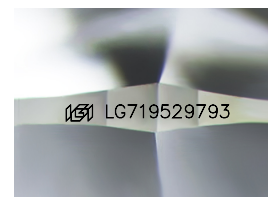
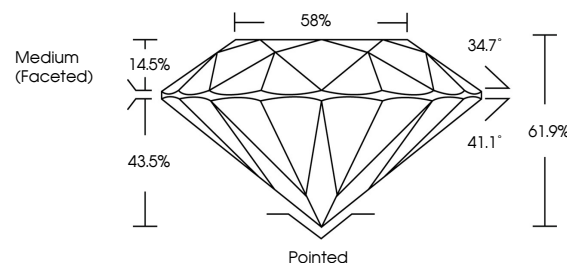


**ELECTRONIC COPY**

## LABORATORY GROWN DIAMOND REPORT

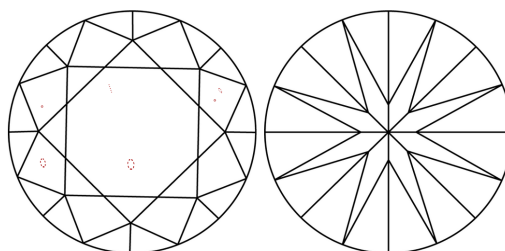
LG719529793  
Report verification at [lgi.org](https://lgi.org)

## PROPORTIONS



Sample Image Used

## CLARITY CHARACTERISTICS



## KEY TO SYMBOLS

Red symbols indicate internal characteristics.  
Green symbols indicate external characteristics.

## COLOR

D E F G H I J Faint Very Light Light

## CLARITY

IF WS<sup>1-2</sup> VS<sup>1-2</sup> SI<sup>1-2</sup> |<sup>1-3</sup>

Internally Flawless	Very Very Slightly Included	Very Slightly Included	Slightly Included	Included
------------------------	--------------------------------	---------------------------	----------------------	----------

## LABORATORY GROWN DIAMOND REPORT



June 25, 2025

IGI Report Number **LG719529793**Description **LABORATORY GROWN DIAMOND**Shape and Cutting Style **ROUND BRILLIANT**

Measurements 9.28 - 9.34 X 5.75 MM

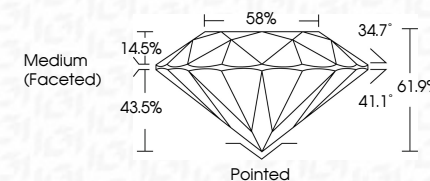
## GRADING RESULTS

Carat Weight **3.04 CARATS**

Color Grade F

Clarity Grade VS 1

Cut Grade **IDEAL**



### ADDITIONAL GRADING INFORMATION

Polish EXCELLENT

Symmetry **EXCELLENT**Fluorescence **NONE**Inscription(s)  LG719529793

Comments: This Laboratory Grown Diamond was created by Chemical Vapor Deposition (CVD) growth process.

Type IIa



June 25, 2026	
GI Report No. G719829793	
ROUND BRILLIANT	
28 - 29 x 9.34 x 5.75 MM	
Carat Weight	3.04 CARATS
Color Grade	F
Clarity Grade	VS-1
Cut Grade	IDEAL
Depth	61.9%
Table	59%
Girdle	Medium (Faceted)
Culet	Pointed
Polish	EXCELLENT
Symmetry	EXCELLENT
Fluorescence	NONE
Description(s)	#6916719829793
Comments:	
	This Laboratory Grown Diamond was created by Chemical Vapor Deposition (CVD) growth process.
Type IIA	

