

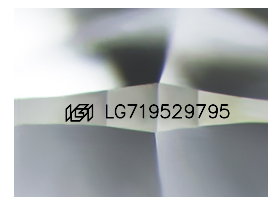
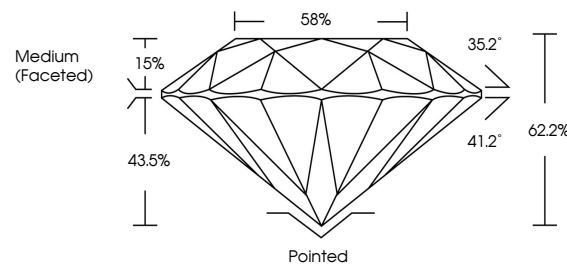


ELECTRONIC COPY

LABORATORY GROWN DIAMOND REPORT

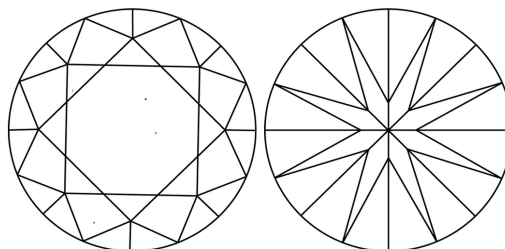
LG719529795
Report verification at igi.org

PROPORTIONS



Sample Image Used

CLARITY CHARACTERISTICS



KEY TO SYMBOLS

Red symbols indicate internal characteristics.
Green symbols indicate external characteristics.

COLOR

D E F G H I J Faint Very Light Light

CLARITY

IF WS¹⁻² VS¹⁻² SI¹⁻² |¹⁻³

Internally Flawless	Very Very Slightly Included	Very Slightly Included	Slightly Included	Included
------------------------	--------------------------------	---------------------------	----------------------	----------



June 25, 2025

IGI Report Number **LG719529795**

Description	LABORATORY GROWN DIAMOND
-------------	--------------------------

Shape and Cutting Style **ROUND BRILLIANT**

Measurements **9.24 - 9.28 X 5.77 MM**

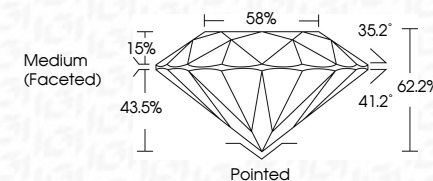
GRADING RESULTS

Carat Weight **3.04 CARATS**

Color Grade E

Clarity Grade **VVS 2**

Cut Grade **IDEAL**



ADDITIONAL GRADING INFORMATION

Polish **EXCELLENT**Symmetry **EXCELLENT**Fluorescence NONIInscription(s) LG719529795

Comments: This Laboratory Grown Diamond was created by Chemical Vapor Deposition (CVD) growth process.
Type IIa



© IGI 2020, International Gemological Institute

FD - 10 20



THIS DOCUMENT WAS PRODUCED WITH THE FOLLOWING SECURITY MEASURES: SPECIAL DOCUMENT PAPER, INK SCREENS, WATERMARK, BACKGROUND DESIGNS, HOLOGRAM AND OTHER SECURITY FEATURES NOT LISTED AND DO EXCEED DOCUMENT SECURITY INDUSTRY GUIDELINES

www.igi.org

June 26, 2026	Carat Weight	3.04 CARATS	Pointed
G1 Report No. G71982795	Color Grade	E	EXCELLENT
ROUND BRILLIANT	Depth	62.2%	EXCELLENT
	Table	58%	NONE
	Girdle	Medium (Faceted)	681 LG71982795
	Culet		
	Polish		
	Clarity Grade	VVS 2	
	Fluorescence	IDEAL	
	Symmetry	62.2%	
	Inscriptions(s)		
	Comments:		
	The Laboratory Grown Diamond was created by Chemical Vapor Deposition (CVD) growth process.		
	Type IIA		