

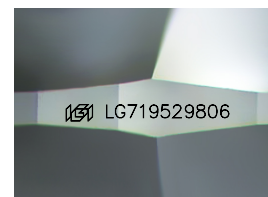
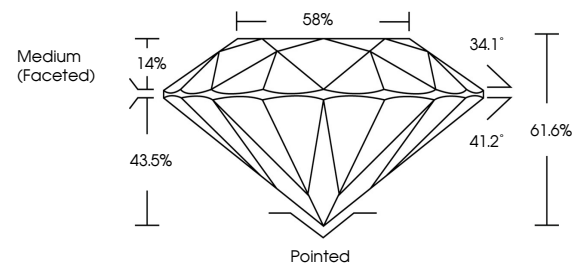


ELECTRONIC COPY

LABORATORY GROWN DIAMOND REPORT

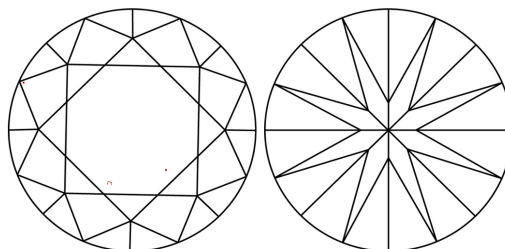
LG719529806
Report verification at igi.org

PROPORTIONS



Sample Image Used

CLARITY CHARACTERISTICS



KEY TO SYMBOLS

Red symbols indicate internal characteristics.
Green symbols indicate external characteristics.

COLOR

D E F G H I J Faint Very Light Light

CLARITY

IF WS¹⁻² VS¹⁻² SI¹⁻² |¹⁻³

Internally Flawless	Very Very Slightly Included	Very Slightly Included	Slightly Included	Included
------------------------	--------------------------------	---------------------------	----------------------	----------



June 25, 2025

IGI Report Number **LG719529806**

Description	LABORATORY GROWN DIAMOND
-------------	--------------------------

Shape and Cutting Style **ROUND BRILLIANT**

Measurements 9.25 - 9.33 X 5.72 MM

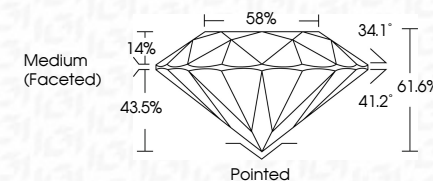
GRADING RESULTS

Carat Weight **3.03 CARATS**

Color Grade **G**

Clarity Grade **VVS 2**

Cut Grade **IDEAL**



ADDITIONAL GRADING INFORMATION

Polish **EXCELLENT**Symmetry **EXCELLENT**Fluorescence **NONE**Inscription(s) LG719529806

Comments: This Laboratory Grown Diamond was created by Chemical Vapor Deposition (CVD) growth process.
Type IIa



© IGI 2020, International Gemological Institute

FD - 10 20



THIS DOCUMENT WAS PRODUCED WITH THE FOLLOWING SECURITY MEASURES: SPECIAL DOCUMENT PAPER, INK SCREENS, WATERMARK, BACKGROUND DESIGNS, HOLOGRAM AND OTHER SECURITY FEATURES NOT LISTED AND DO EXCEED DOCUMENT SECURITY INDUSTRY GUIDELINES

www.igi.org

June 26, 2026	Carat Weight	3.03 CARATS	Pointed
G Report No. LG719629906	Color Grade	G	EXCELLENT
ROUND BRILLIANT	Depth	VVS 2	EXCELLENT
	Table	IDEAL	NONE
	Girdle	61.6%	681 LG719629906
	Fluorescence	58%	
	Symmetry	Medium (Faceted)	
	Culet		
	Polish		
	Fluorescence Description(s)		
	Comments:		
	The Laboratory Grown Diamond was created by Chemical Vapor Deposition (CVD) growth process.		
	Type IIA		