

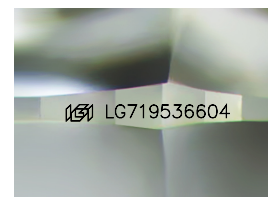
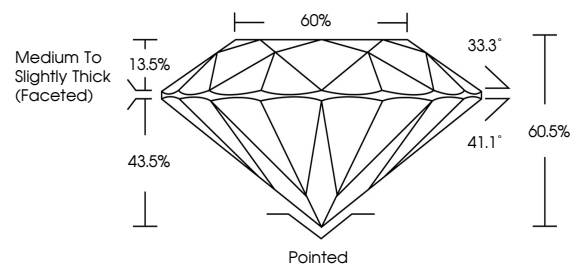


ELECTRONIC COPY

LABORATORY GROWN DIAMOND REPORT

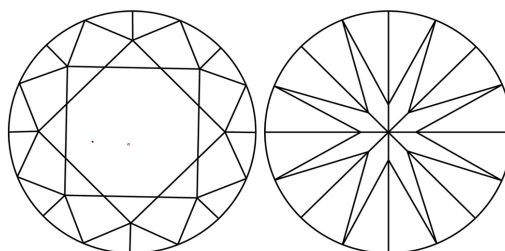
LG719536604
Report verification at igi.org

PROPORTIONS



Sample Image Used

CLARITY CHARACTERISTICS



KEY TO SYMBOLS

Red symbols indicate internal characteristics.
Green symbols indicate external characteristics.

COLOR

D E F G H I J Faint Very Light Light

CLARITY

IF WS¹⁻² VS¹⁻² SI¹⁻² |¹⁻³

Internally Flawless	Very Very Slightly Included	Very Slightly Included	Slightly Included	Included
------------------------	--------------------------------	---------------------------	----------------------	----------



July 5, 2025

IGI Report Number **LG719536604**Description **LABORATORY GROWN DIAMOND**Shape and Cutting Style **ROUND BRILLIANT**

Measurements 8.21 - 8.24 X 4.98 MM

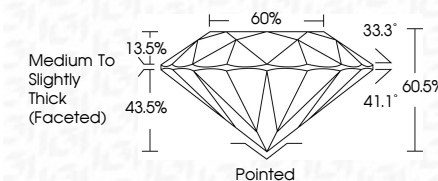
GRADING RESULTS

Carat Weight **2.06 CARATS**

Color Grade	D
-------------	---

Clarity Grade VS 1

Cut Grade **IDEAL**



ADDITIONAL GRADING INFORMATION

Polish **EXCELLENT**Symmetry **EXCELLENT**Fluorescence NONIInscription(s) LG719536604

Comments: This Laboratory Grown Diamond was created by Chemical Vapor Deposition (CVD) growth process.
Type IIa



© IGI 2020, International Gemological Institute

FD - 10 20

www.igi.org



THIS DOCUMENT WAS PRODUCED WITH THE FOLLOWING SECURITY MEASURES: SPECIAL DOCUMENT PAPER, INK SCREENS, WATERMARK, BACKGROUND DESIGNS, HOLOGRAM, AND OTHER SECURITY FEATURES NOT LISTED AND DO EXCEED DOCUMENT SECURITY INDUSTRY GUIDELINES.

JULY 5, 2025 GI Report No. LG71953604 ROUND BRILLIANT	2.06 CARATS D VS 1 IDEAL 60.0% 60% Medium to slightly Thick (faceted)	Polished EXCELLENT EXCELLENT NONE 168 LG71953604	Comments: This is a Natural, Gem created by Chemical Vapor Deposition (CVD) growth process. Type IIa
---	--	--	--