

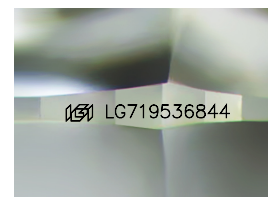
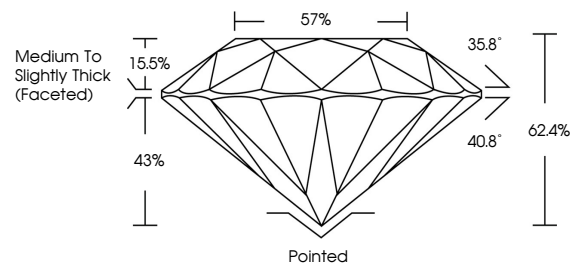


**ELECTRONIC COPY**

## LABORATORY GROWN DIAMOND REPORT

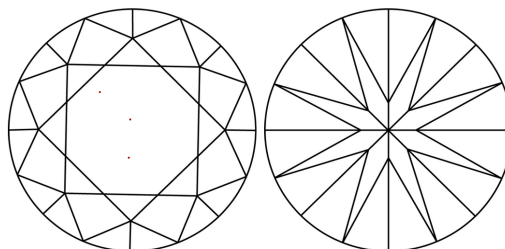
LG719536844  
Report verification at [igi.org](https://igi.org)

## PROPORTIONS



Sample Image Used

## CLARITY CHARACTERISTICS



### KEY TO SYMBOLS

Red symbols indicate internal characteristics.  
Green symbols indicate external characteristics.

## COLOR

D E F G H I J Faint Very Light Light

## CLARITY

IF WS<sup>1-2</sup> VS<sup>1-2</sup> SI<sup>1-2</sup> |<sup>1-3</sup>

Internally Flawless	Very Very Slightly Included	Very Slightly Included	Slightly Included	Included
------------------------	--------------------------------	---------------------------	----------------------	----------

## LABORATORY GROWN DIAMOND REPORT



July 4, 2025

IGI Report Number **LG719536844**Description **LABORATORY GROWN DIAMOND**Shape and Cutting Style **ROUND BRILLIANT**

Measurements 9.65 - 9.71 X 6.04 MM

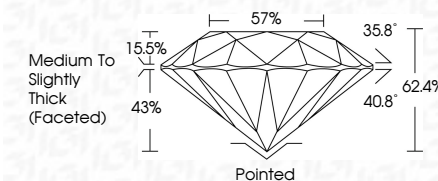
## GRADING RESULTS

Carat Weight **3.53 CARATS**

Color Grade E

Clarity Grade **VS 2**

Cut Grade **IDEAL**



### ADDITIONAL GRADING INFORMATION

Polish **EXCELLENT**Symmetry **EXCELLENT**Fluorescence **NONE**Inscription(s)  LG719536844

Comments: This Laboratory Grown Diamond was created by Chemical Vapor Deposition (CVD) growth process.  
Type IIa



© IGI 2020, International Gemological Institute

FD - 10 20

**www.igi.org**



THIS DOCUMENT WAS PRODUCED WITH THE FOLLOWING SECURITY MEASURES: SPECIAL DOCUMENT PAPER, INK SCREENS, WATERMARK, BACKGROUND DESIGNS, HOLOGRAM AND OTHER SECURITY FEATURES NOT LISTED AND DO EXCEED DOCUMENT SECURITY INDUSTRY GUIDELINE

<div> <div> </div> <div> <p> <b>July 4, 2025</b>  <b>GI Report No. LG719536944</b>  <b>ROUND BRILLIANT</b> </p> </div> </div>	<div> <div> <p>3.53 CARATS</p> </div> <div> <p>E</p> </div> </div>	<div> <div> <p>VVS 2</p> </div> <div> <p>IDEAL</p> </div> </div>	<div> <div> <p>62.4%</p> </div> <div> <p>57%</p> </div> </div>	<div> <div> <p>Medium to Slightly Thick Faceted</p> </div> </div>	<div> <div> <p>Polished</p> </div> <div> <p>EXCELLENT</p> </div> </div>	<div> <div> <p>NONE</p> </div> </div>	<div> <div> <p>lg719536944</p> </div> </div>
<p>Comments:</p> <p>The Laboratory Grown Diamond was created using the Chemical Vapor Deposition (CVD) growth process.</p> <p>Type IIG</p>							