

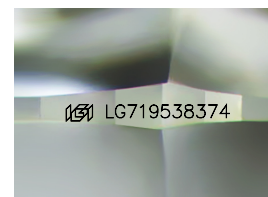
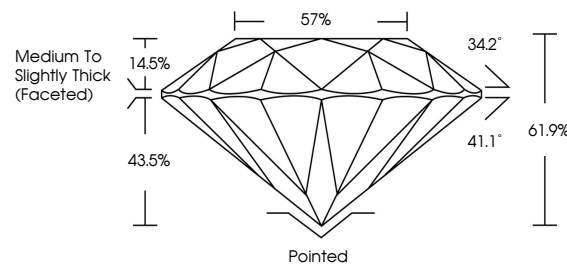


ELECTRONIC COPY

LABORATORY GROWN DIAMOND REPORT

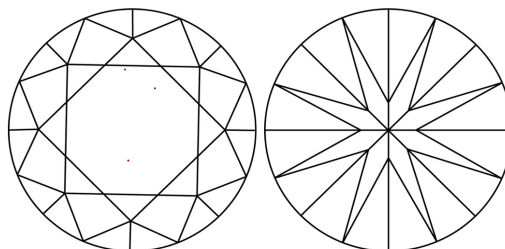
LG719538374
Report verification at igi.org

PROPORTIONS



Sample Image Used

CLARITY CHARACTERISTICS



KEY TO SYMBOLS

Red symbols indicate internal characteristics.
Green symbols indicate external characteristics.

COLOR

D E F G H I J Faint Very Light Light

CLARITY

IF WS¹⁻² VS¹⁻² SI¹⁻² |¹⁻³

Internally Flawless	Very Very Slightly Included	Very Slightly Included	Slightly Included	Included
------------------------	--------------------------------	---------------------------	----------------------	----------



July 3, 2025

IGI Report Number **LG719538374**Description **LABORATORY GROWN DIAMOND**Shape and Cutting Style **ROUND BRILLIANT**

Measurements 6.62 - 6.68 X 4.12 MM

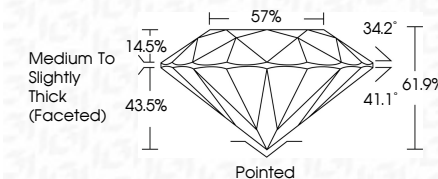
GRADING RESULTS

Carat Weight 1.11 CARAT

Color Grade	D
-------------	---

Clarity Grade **VVS 2**

Cut Grade **IDEAL**



ADDITIONAL GRADING INFORMATION

Polish **EXCELLENT**Symmetry **EXCELLENT**Fluorescence **NONE**Inscription(s)  LG719538374

Comments: This Laboratory Grown Diamond was created by Chemical Vapor Deposition (CVD) growth process.
Type IIa



© IGI 2020, International Gemological Institute

FD - 10 20



THIS DOCUMENT WAS PRODUCED WITH THE FOLLOWING SECURITY MEASURES: SPECIAL DOCUMENT PAPER, INK SCREENS, WATERMARK, BACKGROUND DESIGNS, HOLOGRAM AND OTHER SECURITY FEATURES NOT LISTED AND DO EXCEED DOCUMENT SECURITY INDUSTRY GUIDELINES

www.igi.org

	July 3, 2025
	GJ Report No LG71963874
	ROUND BRILLIANT
	L-6.02 - G-6.8 X 4.12 MM
	Carat Weight 1.11 CARAT
	Color Grade D
	Clarity Grade VVS 2
	Cut Grade IDEAL
	Depth 61.9%
	Table 57%
	Girdle Medium to Slightly Thick (Faceted)
	Culet Polished
	Polish EXCELLENT
	Symmetry EXCELLENT
	Fluorescence NONE
	Inscriptions() #61 LG71963874
Comments:	This Laboratory-Grown Diamond was synthesized by Chemical Vapor Deposition (CVD) growth process.
Type IIA	