



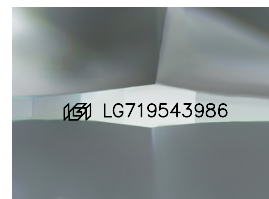
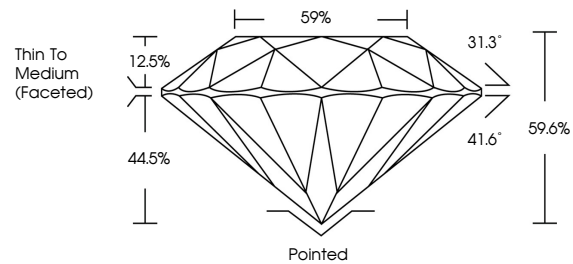
**INTERNATIONAL  
GEMOLOGICAL  
INSTITUTE**

**ELECTRONIC COPY**

## LABORATORY GROWN DIAMOND REPORT

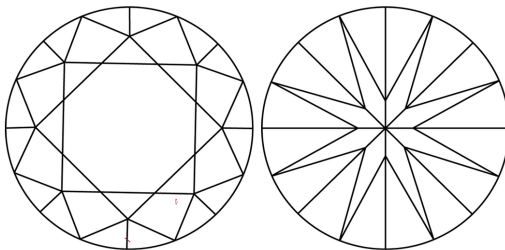
LG719543986  
Report verification at [igi.org](https://www.igi.org)

## PROPORTIONS



Sample Image Used

## CLARITY CHARACTERISTICS



## KEY TO SYMBOLS

Red symbols indicate internal characteristics.  
Green symbols indicate external characteristics.

## COLOR

D E F G H I J Faint Very Light Light

## CLARITY

IF      WS<sup>1-2</sup>      VS<sup>1-2</sup>      SI<sup>1-2</sup>      |<sup>1-3</sup>

Internally Flawless	Very Very Slightly Included	Very Slightly Included	Slightly Included	Included
------------------------	--------------------------------	---------------------------	----------------------	----------



June 30, 2025

IGI Report Number **LG719543986**

Description	LABORATORY GROWN DIAMOND
-------------	--------------------------

Shape and Cutting Style **ROUND BRILLIANT**

Measurements 6.65 - 6.74 X 3.98 MM

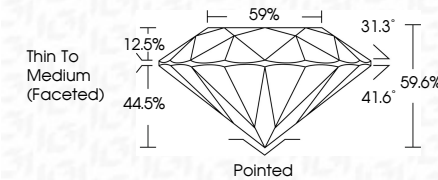
## GRADING RESULTS

Carat Weight 1.05 CARAT

Color Grade	D
-------------	---

Clarity Grade **VVS 2**

Cut Grade **EXCELLENT**



### ADDITIONAL GRADING INFORMATION

Polish **EXCELLENCE**Symmetry **EXCELLENCE**

Fluorescence NONI

Inscription(s)  LG71954398

Comments: This Laboratory Grown Diamond was created by Chemical Vapor Deposition (CVD) growth process.  
Type IIa



IG



© IGI 2020, International Gemological Institute

FD - 10 20

**www.igi.org**

THIS DOCUMENT WAS PRODUCED WITH THE FOLLOWING SECURITY MEASURES: SPECIAL DOCUMENT PAPER, INK SCREENS, WATERMARK, RADIOMER AND DEBRIS, HIGH QUALITY AND OTHER SECURITY FEATURES ARE NOT LISTED, AND DO NOT HAVE PROTECTIVE FEATURES WITH COLORFUL

June 30, 2025  
GI Report No LG719543986  
ROUND BRILLIANT

6.65 - 6.74 X 3.98 MM	1.05 CARAT	VVS 2	Pointed
Carat Weight	EXCELLENT	89.6%	EXCELLENT
Color Grade		89%	EXCELLENT
Clarity Grade		Thin to Medium (fractured)	NONE
Cut Grade			EXCELLENT
Depth			FLUORESCENCE
Table			
Girdle			
Culet			
Polish			
Symmetry			
Fluorescence			

Comments:  
This Laboratory Grown Diamond was  
created by Chemical Vapor Deposition  
(CVD) growth process.