



**ELECTRONIC COPY**

## LABORATORY GROWN DIAMOND REPORT

July 1, 2025	
IGI Report Number	LG719547029
Description	LABORATORY GROWN DIAMOND
Shape and Cutting Style	ROUND BRILLIANT
Measurements	9.29 - 9.38 X 5.76 MM
GRADING RESULTS	
Carat Weight	3.07 CARATS
Color Grade	D
Clarity Grade	INTERNALLY FLAWLESS
Cut Grade	IDEAL

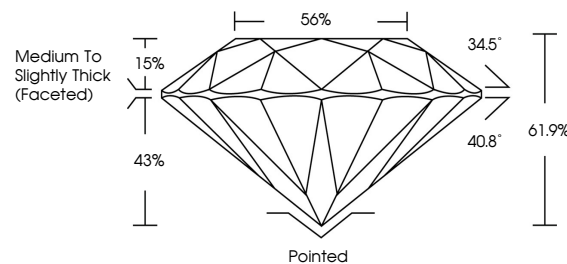
### ADDITIONAL GRADING INFORMATION

Polish	EXCELLENT
Symmetry	EXCELLENT
Fluorescence	NONE
Inscription(s)	 LG719547029

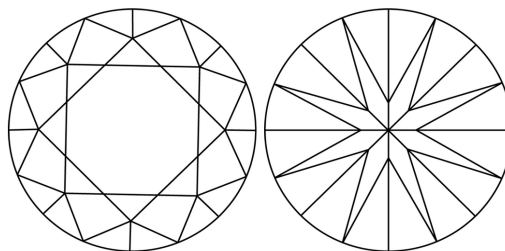
Comments: HEARTS & ARROWS  
As Grown - No indication of post-growth treatment.  
This Laboratory Grown Diamond was created by High  
Pressure High Temperature (HPHT) growth process.  
Type II

LG719547029  
Report verification at [igi.org](https://igi.org)

## PROPORTIONS

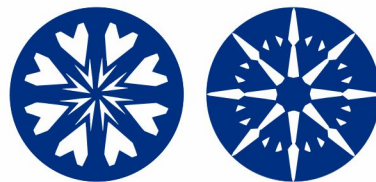


## CLARITY CHARACTERISTICS

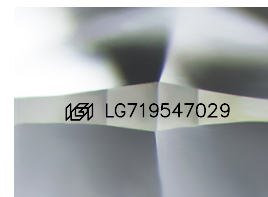


## KEY TO SYMBOLS

Red symbols indicate internal characteristics.  
Green symbols indicate external characteristics.



**www.igi.org**



Sample Image Used

## COLOR

D E F G H I J Faint Very Light Light

## CLARITY

IF      WS<sup>1-2</sup>      VS<sup>1-2</sup>      S<sup>1-2</sup>      |<sup>1-3</sup>

Internally Flawless	Very Very Slightly Included	Very Slightly Included	Slightly Included	Included
------------------------	--------------------------------	---------------------------	----------------------	----------



© IGI 2020, International Gemological Institute

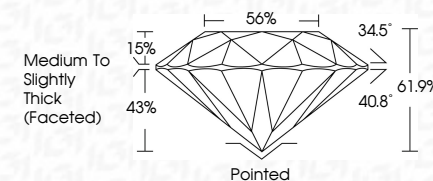
FD - 10 20

THIS DOCUMENT WAS PRODUCED WITH THE FOLLOWING SECURITY MEASURES: SPECIAL DOCUMENT PAPER, INK SCREENS, WATERMARK, BACKGROUND DESIGNS, HOLOGRAM AND OTHER SECURITY FEATURES NOT LISTED AND DO EXCEED DOCUMENT SECURITY INDUSTRY GUIDELINES

## LABORATORY GROWN DIAMOND REPORT



July 1, 2025	
IGI Report Number	LG719547029
Description	LABORATORY GROWN DIAMOND
Shape and Cutting Style	ROUND BRILLIANT
Measurements	9.29 - 9.38 X 5.76 MM
GRADING RESULTS	
Carat Weight	3.07 CARATS
Color Grade	D
Clarity Grade	INTERNALLY FLAWLESS
Cut Grade	IDEAL



### ADDITIONAL GRADING INFORMATION

Polish	EXCELLENT
Symmetry	EXCELLENT
Fluorescence	NONE
Inscription(s)	 LG719547029
Comments: HEARTS & ARROWS	
As Grown - No indication of post-growth treatment.	
This Laboratory Grown Diamond was created by High Pressure High Temperature (HPHT) growth process.	
Type II	



JUN 1, 2025		IGI Report No LG719647029		ROUND BRILLIANT					
2.29 - 2.29 - 5.35 X 5.76 MM		Carat Weight		3.07 CARATS					
Color Grade		Color		D					
Clarity Grade		Clarity		IF					
Cut Grade		Cut		IDEAL					
Depth		Table		61.9%					
Girdle		Girdle		56%					
				Medium to slightly Thick Faceted					
Culet		Polished		Polished					
Pavil		Excellent		EXCELLENT					
Symmetry		Excellent		EXCELLENT					
Fluorescence		None		NONE					
Inscriptions				IGI LG719647029					
Comments:									
As Graded - No indication of post-growth treatment.									
This Laboratory Grown Diamond was created by High Pressure High Temperature (HPHT) growth process.									