



**ELECTRONIC COPY**

## LABORATORY GROWN DIAMOND REPORT

July 1, 2025	
IGI Report Number	LG719547030
Description	LABORATORY GROWN DIAMOND
Shape and Cutting Style	ROUND BRILLIANT
Measurements	9.45 - 9.51 X 5.69 MM

## GRADING RESULTS

Carat Weight	3.11 CARATS
Color Grade	D
Clarity Grade	INTERNALLY FLAWLESS
Cut Grade	IDEAL

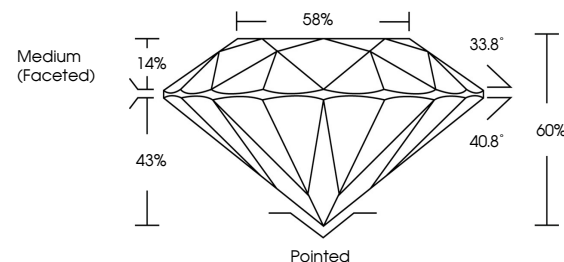
### ADDITIONAL GRADING INFORMATION

Polish	EXCELLENT
Symmetry	EXCELLENT
Fluorescence	NONE
Inscription(s)	 LG719547030

Comments: HEARTS & ARROWS  
As Grown - No indication of post-growth treatment.  
This Laboratory Grown Diamond was created by High  
Pressure High Temperature (HPHT) growth process.  
Type II

LG719547030  
Report verification at [lgi.org](https://lgi.org)

## PROPORTIONS



## CLARITY CHARACTERISTICS

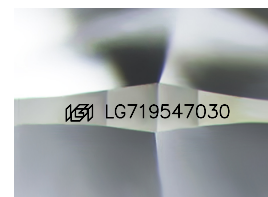


### KEY TO SYMBOLS

Red symbols indicate internal characteristics.  
Green symbols indicate external characteristics.



**www.igi.org**



Sample Image Used

## COLOR

D E F G H I J Faint Very Light Light

## CLARITY

IF WS<sup>1-2</sup> VS<sup>1-2</sup> SI<sup>1-2</sup> |<sup>1-3</sup>

Internally Flawless	Very Very Slightly Included	Very Slightly Included	Slightly Included	Included
------------------------	--------------------------------	---------------------------	----------------------	----------



© IGI 2020, International Gemological Institute

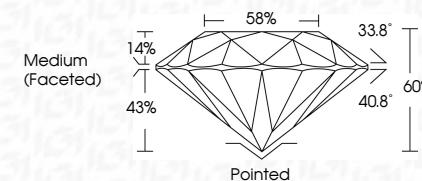
FD - 10 20

THIS DOCUMENT WAS PRODUCED WITH THE FOLLOWING SECURITY MEASURES: SPECIAL DOCUMENT PAPER, INK SCREENS, WATERMARK BACKGROUND DESIGNS, HOLOGRAM AND OTHER SECURITY FEATURES NOT LISTED AND DO EXCEED DOCUMENT SECURITY INDUSTRY GUIDELINES

## LABORATORY GROWN DIAMOND REPORT



July 1, 2025	
IGI Report Number	LG719547030
Description	LABORATORY GROWN DIAMOND
Shape and Cutting Style	ROUND BRILLIANT
Measurements	9.45 - 9.51 X 5.69 MM
GRADING RESULTS	
Carat Weight	3.11 CARATS
Color Grade	D
Clarity Grade	INTERNALLY FLAWLESS
Cut Grade	IDEAL



### ADDITIONAL GRADING INFORMATION

Polish	EXCELLENT
Symmetry	EXCELLENT
Fluorescence	NONE
Inscription(s)	(15) LG719547030

Comments: HEARTS & ARROWS  
As Grown - No indication of post-growth treatment.  
This Laboratory Grown Diamond was created by High  
Pressure High Temperature (HPHT) growth process.  
Type II



<p>JULY 1, 2025</p> <p>GI Report No. L6719647030</p> <p>ROUND BRILLIANT</p>	<p>3.11 CARATS</p> <p>D</p> <p>IF</p> <p>IDEAL</p> <p>60%</p> <p>58%</p> <p>Medium (faceted)</p>	<p>Pointed</p> <p>EXCELLENT</p> <p>EXCELLENT</p> <p>EXCELLENT</p> <p>NONE</p> <p>161 L6719647030</p>
<p>4.65 x 5.61 x 5.69 MM</p> <p>Color Weight</p> <p>Color Grade</p> <p>Clarity Grade</p> <p>Cut Grade</p> <p>Depth</p> <p>Table</p> <p>Girdle</p>	<p>3.11 CARATS</p> <p>D</p> <p>IF</p> <p>IDEAL</p> <p>60%</p> <p>58%</p> <p>Medium (faceted)</p>	<p>Pointed</p> <p>EXCELLENT</p> <p>EXCELLENT</p> <p>EXCELLENT</p> <p>NONE</p> <p>161 L6719647030</p>