

**ELECTRONIC COPY**

## LABORATORY GROWN DIAMOND REPORT

|                         |                          |
|-------------------------|--------------------------|
| July 3, 2025            |                          |
| IGI Report Number       | LG719551002              |
| Description             | LABORATORY GROWN DIAMOND |
| Shape and Cutting Style | ROUND BRILLIANT          |
| Measurements            | 6.71 - 6.75 X 4.08 MM    |

## GRADING RESULTS

|               |            |
|---------------|------------|
| Carat Weight  | 1.13 CARAT |
| Color Grade   | D          |
| Clarity Grade | VVS 2      |
| Cut Grade     | IDEAL      |

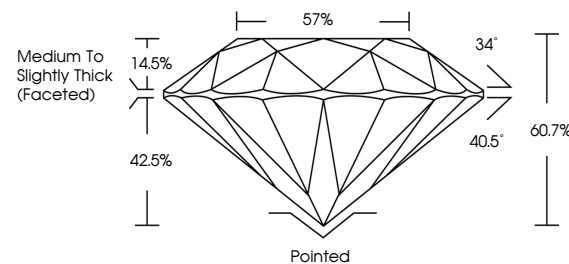
### ADDITIONAL GRADING INFORMATION

|                |   |
|----------------|---|
| Polish         | EXCELLENT   |
| Symmetry       | EXCELLENT   |
| Fluorescence   | NONE  |
| Inscription(s) |  LG719551002 |

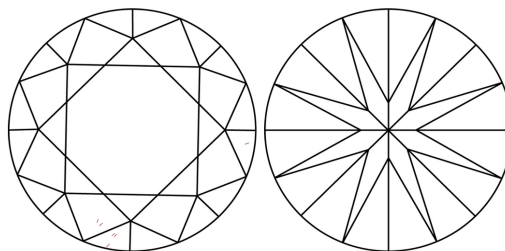
Comments: As Grown - No indication of post-growth treatment.  
This Laboratory Grown Diamond was created by High Pressure High Temperature (HPHT) growth process.  
Type II

LG719551002  
Report verification at [igi.org](http://igi.org)

## PROPORTIONS

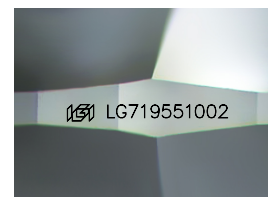


## CLARITY CHARACTERISTICS



## KEY TO SYMBOLS

Red symbols indicate internal characteristics.  
Green symbols indicate external characteristics.



Sample Image Used

**COLOR**

D E F G H I J Faint Very Light Light

## CLARITY

IF      WS<sup>1-2</sup>      VS<sup>1-2</sup>      S<sup>1-2</sup>      |<sup>1-3</sup>

| Internally<br>Flawless | Very Very<br>Slightly Included | Very<br>Slightly Included | Slightly<br>Included | Included |
|------------------------|--------------------------------|---------------------------|----------------------|----------|
|------------------------|--------------------------------|---------------------------|----------------------|----------|



© IGI 2020, International Gemological Institute

FD - 10 20

**www.igi.org**

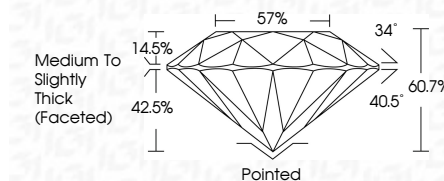
## LABORATORY GROWN DIAMOND REPORT



|                         |                          |
|-------------------------|--------------------------|
| July 3, 2025            |                          |
| IGI Report Number       | LG719551002              |
| Description             | LABORATORY GROWN DIAMOND |
| Shape and Cutting Style | ROUND BRILLIANT          |
| Measurements            | 6.71 - 6.75 X 4.08 MM    |

## GRADING RESULTS

|               |            |
|---------------|------------|
| Carat Weight  | 1.13 CARAT |
| Color Grade   | D          |
| Clarity Grade | VVS 2      |
| Cut Grade     | IDEAL      |



### ADDITIONAL GRADING INFORMATION

|  |                           |
|--|---------------------------|
| Polish   | EXCELLENT                 |
| Symmetry   | EXCELLENT                 |
| Fluorescence   | NONE                      |
| Inscription(s)   | <del>LG</del> LG719551002 |
| Comments: As Grown - No indication of post-growth treatment.                                       |                           |
| This Laboratory Grown Diamond was created by High Pressure High Temperature (HPHT) growth process. |                           |
| Type II  |                           |



|                     |                                  |                       |                              |  |  |   |   |
|---------------------|----------------------------------|-----------------------|------------------------------|--|--|---|---|
| <b>July 3, 2025</b> | <b>IGI Report No LG719551002</b> | <b>ROUND BRILLANT</b> | <b>6.71 - 6.75 X 4.08 MM</b> | <b>Carat Weight<br/>Color Grade<br/>Clarity Grade<br/>Cut Grade<br/>Depth<br/>Table<br/>Girdle</b> | <b>1.13 CARAT<br/>D<br/>VVS 2<br/>IDEAL<br/>60.7%<br/>57%<br/><br/>Medium to Slightly<br/>Thick Facetway</b> | <b>Painted<br/>EXCELLENT<br/>EXCELLENT<br/>NONE<br/>LG719551002</b> | <b>Comments:<br/>As Grown - No indication of post-growth treatment.<br/>The Laboratory Grown Diamond was created by High Pressure High Temperature (HPHT) growth process.</b> |
|---------------------|----------------------------------|-----------------------|------------------------------|--|--|---|---|