

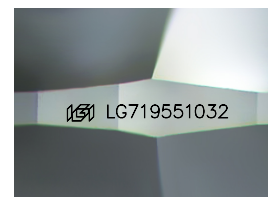
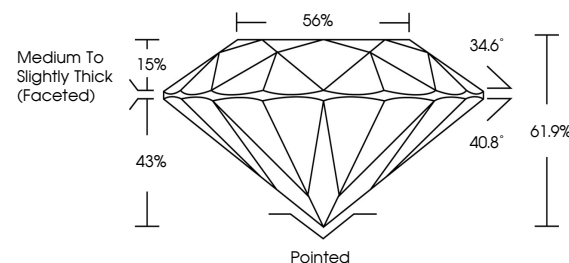


ELECTRONIC COPY

LABORATORY GROWN DIAMOND REPORT

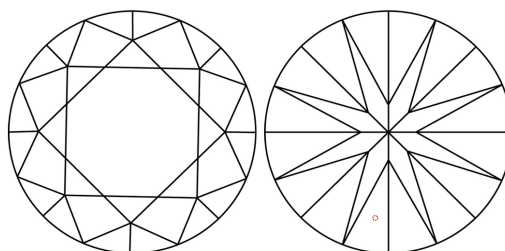
LG719551032
Report verification at lgi.org

PROPORTIONS



Sample Image Used

CLARITY CHARACTERISTICS



KEY TO SYMBOLS

Red symbols indicate internal characteristics.
Green symbols indicate external characteristics.

COLOR

D E F G H I J Faint Very Light Light

CLARITY

IF WS¹⁻² VS¹⁻² SI¹⁻² |¹⁻³

| | | | | |
|------------------------|--------------------------------|---------------------------|----------------------|----------|
| Internally Flawless | Very Very Slightly Included | Very Slightly Included | Slightly Included | Included |
|------------------------|--------------------------------|---------------------------|----------------------|----------|



July 3, 2025

IGI Report Number **LG719551032**Description **LABORATORY GROWN DIAMOND**Shape and Cutting Style **ROUND BRILLIANT**

Measurements 8.16 - 8.21 X 5.07 MM

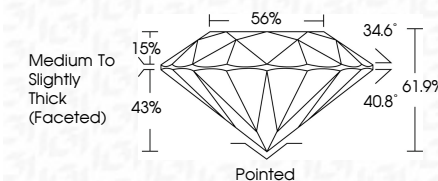
GRADING RESULTS

Carat Weight **2.08 CARATS**

Color Grade D

Clarity Grade VVS 1

Cut Grade **IDEAL**



ADDITIONAL GRADING INFORMATION

Polish **EXCELLENT**Symmetry **EXCELLENT**Fluorescence **NONE**Inscription(s) LG719551032

Comments: As Grown - No indication of post-growth treatment.

This Laboratory Grown Diamond was created by High Pressure High Temperature (HPHT) growth process.

Type II



© IGI 2020, International Gemological Institute

FD - 10 20

www.igi.org



THIS DOCUMENT WAS PRODUCED WITH THE FOLLOWING SECURITY MEASURES: SPECIAL DOCUMENT PAPER, INK SCREENS, WATERMARK, BACKGROUND DESIGNS, HOLOGRAM AND OTHER SECURITY FEATURES NOT LISTED AND DO EXCEED DOCUMENT SECURITY INDUSTRY GUIDELINE

| | | | |
|------------------------|----------------------------------|---|------------------|
| JUN 3, 2025 | | IGI Report No. I67119551032 | |
| ROUND BRILLIANT | | | |
| 18.16 - 8.21 X 5.07 MM | | | |
| Carat Weight | 2.08 CARATS | Color Grade | D |
| Clarity Grade | VVS 1 | Cut Grade | IDEAL |
| Depth | 61.9% | Table | 56% |
| Girdle | Medium to Slightly Thick (Faced) | Culet | Pointed |
| Symmetry | EXCELLENT | Fluorescence | EXCELLENT |
| Inscription(s) | NONE | | 689 L67119551032 |
| Comments: | | As Grown - No indication of post-growth treatment. | |
| | | The Laboratory Grown Diamond was created by High Pressure High Temperature (HPHT) growth process. | |
| | | Type IIb | |