

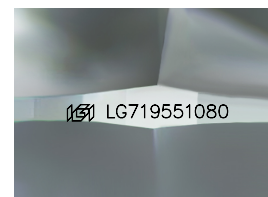
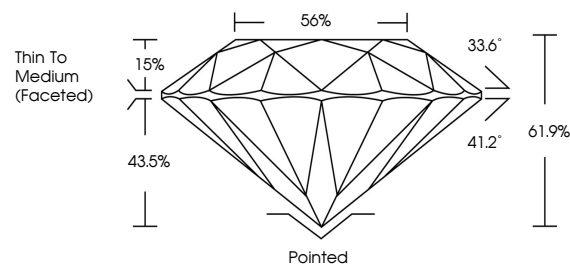


ELECTRONIC COPY

LABORATORY GROWN DIAMOND REPORT

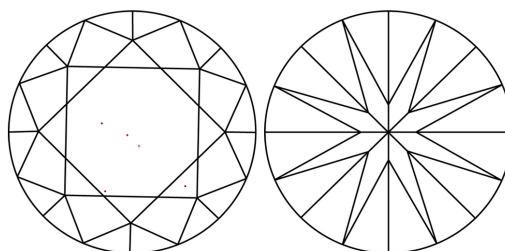
LG719551080
Report verification at igi.org

PROPORTIONS



Sample Image Used

CLARITY CHARACTERISTICS



KEY TO SYMBOLS

Red symbols indicate internal characteristics.
Green symbols indicate external characteristics.

COLOR

D E F G H I J Faint Very Light Light

CLARITY

IF WS¹⁻² VS¹⁻² SI¹⁻² |¹⁻³

Internally Flawless	Very Very Slightly Included	Very Slightly Included	Slightly Included	Included
------------------------	--------------------------------	---------------------------	----------------------	----------



July 3, 2025

IGI Report Number **LG719551080**Description **LABORATORY GROWN DIAMOND**Shape and Cutting Style **ROUND BRILLIANT**

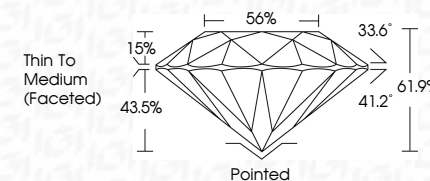
Measurements 9.25 - 9.30 X 5.74 MM

GRADING RESULTS

Carat Weight **3.01 CARATS**

Color Grade **E**Clarity Grade WS 2

Cut Grade **IDEAL**



ADDITIONAL GRADING INFORMATION

Polish **EXCELLENT**Symmetry **EXCELLENT**Fluorescence **NONE**Inscription(s) LG719551080

Comments: This Laboratory Grown Diamond was created by Chemical Vapor Deposition (CVD) growth process.
Type IIa



IG



© IGI 2020, International Gemological Institute

FD - 10 20

www.igi.org

THIS DOCUMENT WAS PRODUCED WITH THE FOLLOWING SECURITY MEASURES: SPECIAL DOCUMENT PAPER, INK SCREENS, WATERMARK BACKGROUND DESIGNS, HOLOGRAM AND OTHER SECURITY FEATURES NOT LISTED AND DO EXCEED DOCUMENT SECURITY INDUSTRY GUIDELINES

July 3, 2025	Report No. LG719551080	3.01 CARATS	VVS 2	Polished	NONE	#69 LG719551080	Comments: The Laboratory Grown Diamond was found to be a Natural Vapor Deposition (CVD) growth process. Type IIa
ROUND BRILLIANT		IDEAL	EXCELLENT				
		61.5%	EXCELLENT				
		55%	EXCELLENT				
		Thin To Medium (Faceted)	EXCELLENT				
	Carat Weight			Culet			
	Color Grade		Clarity Grade	Polish			
			Color Grade	Symmetry			
			Depth	Fluorescence			
			Table	Inscriptions(s)			
			Girdle				