

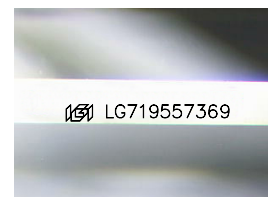
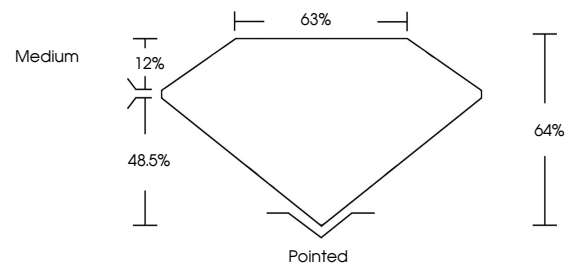


ELECTRONIC COPY

LABORATORY GROWN DIAMOND REPORT

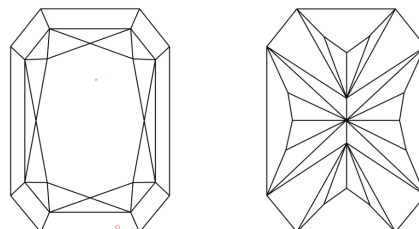
LG719557369
Report verification at lgi.org

PROPORTIONS



Sample Image Used

CLARITY CHARACTERISTICS



KEY TO SYMBOLS

Red symbols indicate internal characteristics.
Green symbols indicate external characteristics.

COLOR

D E F G H I J Faint Very Light Light

CLARITY

IF VWS¹⁻² VS¹⁻² SI¹⁻² I¹⁻³

Internally Flawless	Very Very Slightly Included	Very Slightly Included	Slightly Included	Included
------------------------	--------------------------------	---------------------------	----------------------	----------



© IGI 2020, International Gemological Institute

FD - 10 20

www.igi.org

LABORATORY GROWN DIAMOND REPORT



July 7, 2025

IGI Report Number **LG719557369**Description **LABORATORY GROWN DIAMOND**

Shape and Cutting Style

Measurements 11.17 X 7.44 X 4.76 MM

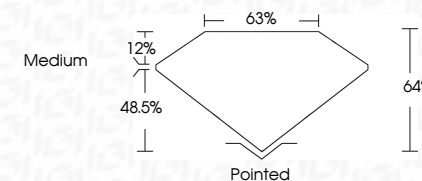
GRADING RESULTS

Carat Weight **3.51 CARATS**

Color Grade F

Clarity Grade VVS 2

Cut Grade **EXCELLENT**



ADDITIONAL GRADING INFORMATION

Polish **EXCELLENT**Symmetry **EXCELLENT**Fluorescence **NONE**Inscription(s) LG719557369

Comments: This Laboratory Grown Diamond was created by Chemical Vapor Deposition (CVD) growth process.
Type IIa



IG

JUN 7, 2026
GJ Report No. LG71957369
CUT CORNERED BEC, MODIFIED BRILLIANT
DIMENSIONS 11.11 X 7.44 X 4.76 MM
Color Grade
Clarity Grade
F
VVS 2
EXCELLENT
66%
83%
Medium
Poished
EXCELLENT
EXCELLENT
NONE
#GSI G71957369
Comments:
This Laboratory Grown Diamond was created by Chemical Vapor Deposition (CVD) growth process.
Type IIA