



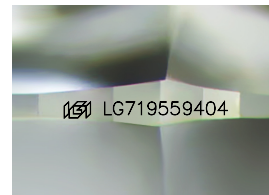
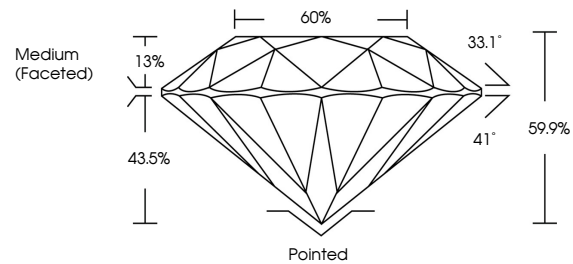
**INTERNATIONAL  
GEMOLOGICAL  
INSTITUTE**

**ELECTRONIC COPY**

## LABORATORY GROWN DIAMOND REPORT

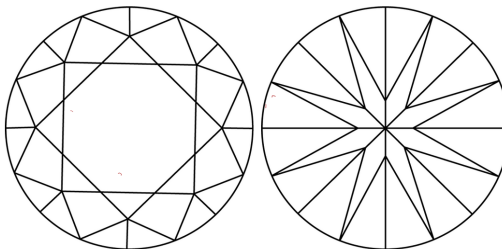
LG719559404  
Report verification at [igi.org](https://igi.org)

## PROPORTIONS



Sample Image Used

## CLARITY CHARACTERISTICS



## KEY TO SYMBOLS

Red symbols indicate internal characteristics.  
Green symbols indicate external characteristics.

**COLOR**

D E F G H I J Faint Very Light Light

## CLARITY

IF      WS<sup>1-2</sup>      VS<sup>1-2</sup>      SI<sup>1-2</sup>      |<sup>1-3</sup>

Internally Flawless	Very Very Slightly Included	Very Slightly Included	Slightly Included	Included
------------------------	--------------------------------	---------------------------	----------------------	----------



© IGI 2020, International Gemological Institute

FD - 10 20

**www.igi.org**

LABORATORY GROWN DIAMOND REPORT



July 1, 2025

IGI Report Number **LG719559404**

Description	LABORATORY GROWN DIAMOND
-------------	--------------------------

Shape and Cutting Style **ROUND BRILLIANT**

Measurements **6.67 - 6.71 X 4.01 MM**

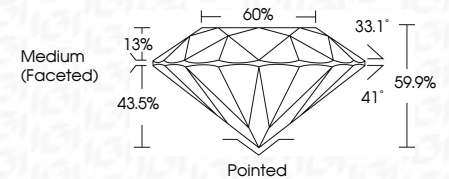
## GRADING RESULTS

Carat Weight **1.09 CARAT**

Color Grade	F
-------------	---

Clarity Grade **VVS 2**

Cut Grade **IDEAL**



### ADDITIONAL GRADING INFORMATION

Polish **EXCELLENT**

Symmetry **EXCELLENT**

Fluorescence **NONE**

Inscription(s)  LG719559404

Comments: This Laboratory Grown Diamond was created by Chemical Vapor Deposition (CVD) growth process.  
Type IIa



IGI

July 1, 2025	IGI Report No LG71959A04	1.09 CADAT	F	VVS2	60%	Medium (Faceted)	Pointed	Comments:
ROUND BRILLIANT		6.67 - 6.71 X 4.01 MM		ID54L	59.5%		EXCELLENT	The Laboratory Grown Diamond was
	Carat Weight						EXCELLENT	created by Chemical Vapor Deposition
	Color Grade						NONE	(CVD) growth process.
	Clarity Grade						lg71959A04	Type IIA
	Cut Grade							
	Depth							
	Table							
	Fluorescence							
	Inscription(s)							
	Culet							
	Polish							
	Symmetry							