



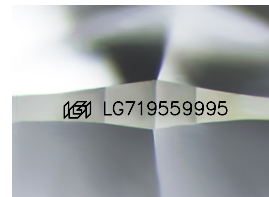
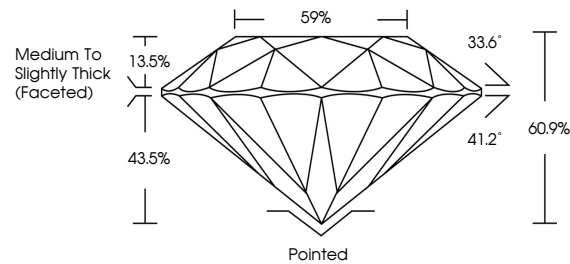
**INTERNATIONAL
GEMOLOGICAL
INSTITUTE**

ELECTRONIC COPY

LABORATORY GROWN DIAMOND REPORT

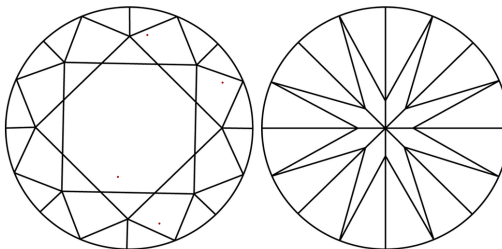
LG719559995
Report verification at igi.org

PROPORTIONS



Sample Image Used

CLARITY CHARACTERISTICS



KEY TO SYMBOLS

Red symbols indicate internal characteristics.
Green symbols indicate external characteristics.

COLOR

D E F G H I J Faint Very Light Light

CLARITY

IF WS¹⁻² VS¹⁻² S¹⁻² 1-3

Internally Flawless	Very Very Slightly Included	Very Slightly Included	Slightly Included	Included
------------------------	--------------------------------	---------------------------	----------------------	----------



© IGI 2020, International Gemological Institute

FD - 10 20

www.igi.org

THIS DOCUMENT WAS PRODUCED WITH THE FOLLOWING SECURITY MEASURES: SPECIAL DOCUMENT PAPER, INK SCREENS, WATERMARK, BACKGROUND DESIGNS, HOLOGRAM AND OTHER SECURITY FEATURES NOT LISTED AND DO EXCEED DOCUMENT SECURITY INDUSTRY GUIDELINES

LABORATORY GROWN DIAMOND REPORT



July 4, 2025

IGI Report Number **LG719559995**

Description	LABORATORY GROWN DIAMOND
-------------	--------------------------

Shape and Cutting Style **ROUND BRILLIANT**

Measurements 10.29 - 10.34 X 6.28 MM

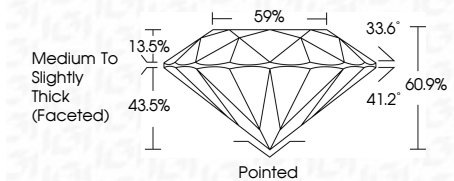
GRADING RESULTS

Carat Weight **4.10 CARATS**

Color Grade	E
-------------	---

Clarity Grade **VVS 2**

Cut Grade **IDEAL**



ADDITIONAL GRADING INFORMATION

Polish **EXCELLENT**Symmetry **EXCELLENT**Fluorescence **NONE**Inscription(s)  LG71955999

Comments: This Laboratory Grown Diamond was created by Chemical Vapor Deposition (CVD) growth process.
Type IIa



IG

<p>JULY 4, 2025</p> <p>IGI Report No I371959995</p> <p>ROUND BRILLIANT</p>	<p>10.29 - 10.34 X 4.28 MM</p> <p>Carat Weight</p> <p>Color Grade</p> <p>Clarity Grade</p> <p>Cut Grade</p> <p>Depth</p> <p>Table</p> <p>Girdle</p>	<p>4.10 CARATS</p> <p>E</p> <p>VVS 2</p> <p>IDEAL</p> <p>60.9%</p> <p>69%</p> <p>Medium to Slightly Thick Faceted</p>	<p>Painted</p> <p>EXCELLENT</p> <p>EXCELLENT</p> <p>NONE</p> <p>inscriptions(s)</p> <p>IGI LG71959995</p>	<p>Comments:</p> <p>This Laboratory Grown Diamond was created by Chemical Vapor Deposition (CVD) growth process.</p> <p>Type IIG</p>
---	--	--	---	--