



ELECTRONIC COPY

LABORATORY GROWN DIAMOND REPORT

June 30, 2025	
IGI Report Number	LG719578227
Description	LABORATORY GROWN DIAMOND
Shape and Cutting Style	ROUND BRILLIANT
Measurements	6.53 - 6.55 X 3.93 MM

GRADING RESULTS

Carat Weight	1.01 CARAT
Color Grade	D
Clarity Grade	VS 1
Cut Grade	IDEAL

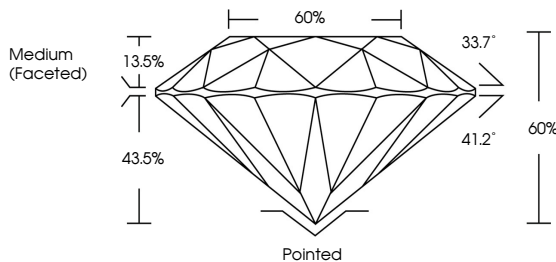
ADDITIONAL GRADING INFORMATION

Polish	EXCELLENT
Symmetry	EXCELLENT
Fluorescence	NONE
Inscription(s)	 LG719578227

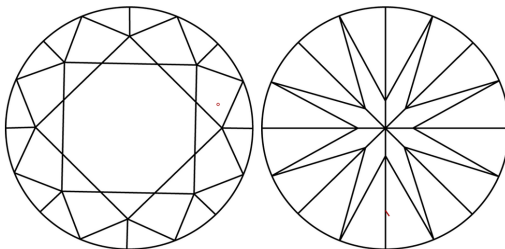
Comments: This Laboratory Grown Diamond was created by Chemical Vapor Deposition (CVD) growth process.
Type IIa

LG719578227
Report verification at igi.org

PROPORTIONS

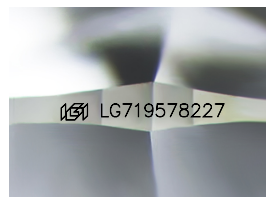


CLARITY CHARACTERISTICS



KEY TO SYMBOLS

Red symbols indicate internal characteristics.
Green symbols indicate external characteristics.



Sample Image Used

COLOR

D E F G H I J Faint Very Light Light

CLARITY

IF VS¹⁻² VS¹⁻² S¹⁻² |¹⁻³

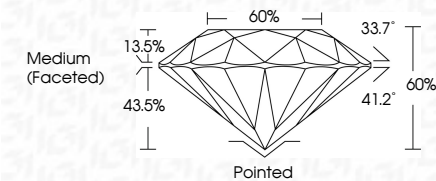
Internally Flawless	Very Very Slightly Included	Very Slightly Included	Slightly Included	Included
------------------------	--------------------------------	---------------------------	----------------------	----------



June 30, 2025	
IGI Report Number	LG719578227
Description	LABORATORY GROWN DIAMOND
Shape and Cutting Style	ROUND BRILLIANT
Measurements	6.53 - 6.55 X 3.93 MM

GRADING RESULTS

Carat Weight	1.01 CARAT
Color Grade	D
Clarity Grade	VS 1
Cut Grade	IDEAL



ADDITIONAL GRADING INFORMATION

Polish	EXCELLENT
Symmetry	EXCELLENT
Fluorescence	NONE
Inscription(s)	 LG719578227
<p>Comments: This Laboratory Grown Diamond was created by Chemical Vapor Deposition (CVD) growth process.</p> <p>Type IIa</p>	



IG



© IGI 2020, International Gemological Institute

FD - 10 20

www.igi.org



June 30, 2025
IGI Report No LG719578227
ROUND BRILLIANT

6.53 - 6.55 X 3.93 MM	D	VS 1	Pointed
Carat Weight	Color Grade	IDEAL	EXCELLENT
Cut Grade	Clarity Grade	60%	NONE
Table	Depth	Medium (faceted)	Fluorescence
Girdle	Symmetry		None
Culet	Polar Plot		None
Polish	Measurements		None
Symmetry			None
Fluorescence			None
Measurements			None

Comments:
This Laboratory Grown Diamond was created by Chemical Vapor Deposition (CVD) growth process.