

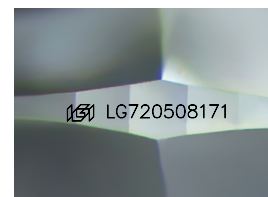
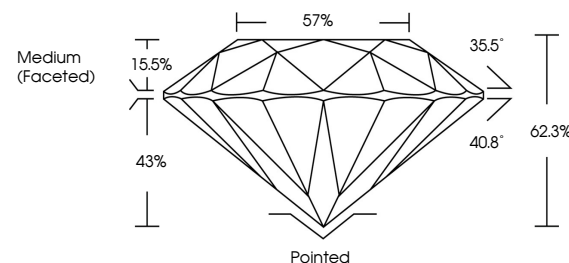


ELECTRONIC COPY

LABORATORY GROWN DIAMOND REPORT

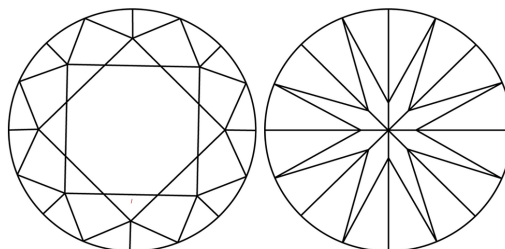
LG720508171
Report verification at igi.org

PROPORTIONS



Sample Image Used

CLARITY CHARACTERISTICS



KEY TO SYMBOLS

Red symbols indicate internal characteristics.
Green symbols indicate external characteristics.

COLOR

D E F G H I J Faint Very Light Light

CLARITY

IF WS¹⁻² VS¹⁻² SI¹⁻² |¹⁻³

| | | | | |
|------------------------|--------------------------------|---------------------------|----------------------|----------|
| Internally Flawless | Very Very Slightly Included | Very Slightly Included | Slightly Included | Included |
|------------------------|--------------------------------|---------------------------|----------------------|----------|



© IGI 2020, International Gemological Institute

FD - 10 20

www.igi.org

LABORATORY GROWN DIAMOND REPORT



July 6, 2025

IGI Report Number **LG720508171**Description **LABORATORY GROWN DIAMOND**Shape and Cutting Style **ROUND BRILLIANT**

| | |
|--------------|-----------------------|
| Measurements | 8.06 - 8.11 X 5.04 MM |
|--------------|-----------------------|

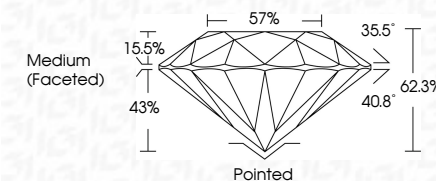
GRADING RESULTS

Carat Weight **2.04 CARATS**

Color Grade E

Clarity Grade WS 2

Cut Grade **IDEAL**



ADDITIONAL GRADING INFORMATION

Polish EXCELLENT

Symmetry **EXCELLENT**Fluorescence **NONE**Inscription(s) LG720508171

Comments: As Grown - No indication of post-growth treatment.

This Laboratory Grown Diamond was created by High Pressure High Temperature (HPHT) growth process.
Type II



| | | | | |
|---------------------------|------------------|-----------------|-----------------------|---|
| July 6, 2025 | 2.04 CARATS | Color Grade | Color Weight | Comments: |
| GI Report No. LG720508171 | E | Clarity Grade | 0.05 - 0.11 X 5.04 MM | No. Growth - No indication of post-growth |
| ROUND BRILLIANT | VVS 2 | Cut Grade | | is a Laboratory Grown Diamond was |
| | IDEAL | Depth | | created by High Pressure High |
| | 62.9% | Table | | temperature (HPHT) growth process. |
| | 57% | Girdle | | Type II |
| | Medium (Faceted) | Culet | | |
| | Pointed | Polish | | |
| | EXCELLENT | Symmetry | | |
| | EXCELLENT | Fluorescence | | |
| | NONE | Inscriptions(s) | | |
| | 169 LG720508171 | | | |