

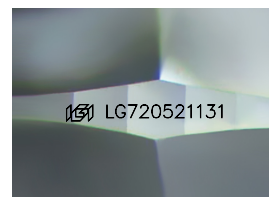
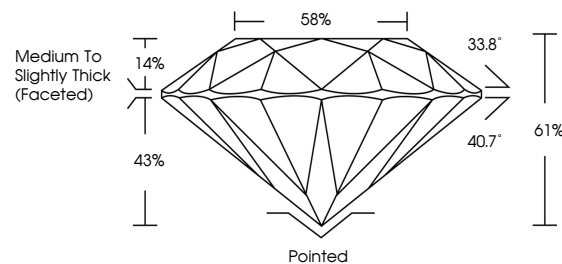


ELECTRONIC COPY

LABORATORY GROWN DIAMOND REPORT

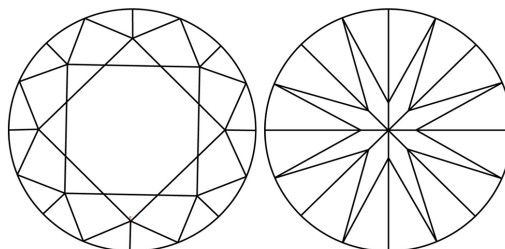
LG720521131
Report verification at igi.org

PROPORTIONS



Sample Image Used

CLARITY CHARACTERISTICS



KEY TO SYMBOLS

Red symbols indicate internal characteristics.
Green symbols indicate external characteristics.

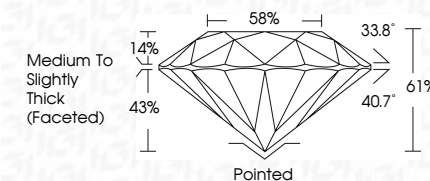


www.igi.org

LABORATORY GROWN DIAMOND REPORT



July 2, 2025	
IGI Report Number	LG720521131
Description	LABORATORY GROWN DIAMOND
Shape and Cutting Style	ROUND BRILLIANT
Measurements	6.67 - 6.69 X 4.07 MM
GRADING RESULTS	
Carat Weight	1.13 CARAT
Color Grade	D
Clarity Grade	VVS 2
Cut Grade	IDEAL



ADDITIONAL GRADING INFORMATION

Polish	EXCELLENT
Symmetry	EXCELLENT
Fluorescence	NONE
Inscription(s)	 LG720521131
Comments: HEARTS & ARROWS	
As Grown - No indication of post-growth treatment.	
This Laboratory Grown Diamond was created by High Pressure High Temperature (HPHT) growth process.	
Type II	



IG

© IGI 2020, International Gemological Institute

FD - 10 20



THIS DOCUMENT WAS PRODUCED WITH THE FOLLOWING SECURITY MEASURES: SPECIAL DOCUMENT PAPER, INK SCREENS, WATERMARK, BACKGROUND DESIGNS, HOLOGRAM AND OTHER SECURITY FEATURES NOT LISTED AND DO EXCEED DOCUMENT SECURITY INDUSTRY GUIDELINE

July 2, 2025
GJ Report No 16720521131

Report No. 15720521131	ROUND BRILLIANT	1.13 CARAT	D
	6.67 - 6.69 X 4.07 MM	VVS 2	
	Color Grade	IDEAL	
	Clarity Grade	61%	
	Cut Grade	89%	
	Depth	Medium to Slightly Thick (Faceted)	
	Table		
	Girdle		
	Culet	Pointed	
	Polish	EXCELLENT	
	Symmetry	EXCELLENT	
	Fluorescence	NONE	
	Measurements	6.67 (2)mm x 4.07 (1)mm	

Comments:
HEARTS & ARROWS
As Grown - No Indication of post-growth
treatment
This Laboratory Grown Diamond was
created by High Pressure High
temperature (HPHT) growth process.