

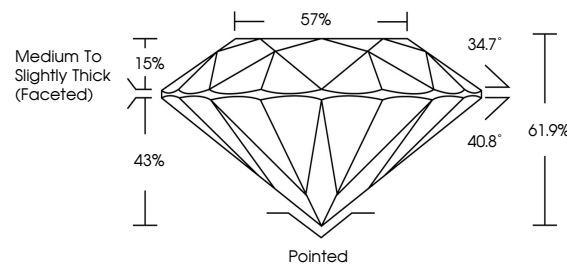


ELECTRONIC COPY

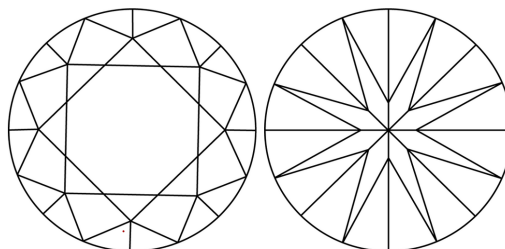
LABORATORY GROWN DIAMOND REPORT

LG720533250
Report verification at igi.org

PROPORTIONS

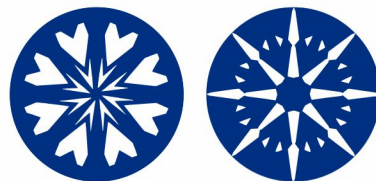


CLARITY CHARACTERISTICS



KEY TO SYMBOLS

Red symbols indicate internal characteristics.
Green symbols indicate external characteristics.

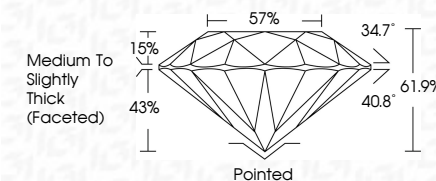


www.igi.org

LABORATORY GROWN DIAMOND REPORT



July 4, 2025	
IGI Report Number	LG720533250
Description	LABORATORY GROWN DIAMOND
Shape and Cutting Style	ROUND BRILLIANT
Measurements	8.55 - 8.60 X 5.31 MM
GRADING RESULTS	
Carat Weight	2.41 CARATS
Color Grade	D
Clarity Grade	VVS 2
Cut Grade	IDEAL



ADDITIONAL GRADING INFORMATION

Polish	EXCELLENT
Symmetry	EXCELLENT
Fluorescence	NONE
Inscription(s)	 LG720533250
Comments: HEARTS & ARROWS	
As Grown - No indication of post-growth treatment.	
This Laboratory Grown Diamond was created by High Pressure High Temperature (HPHT) growth process.	
Type II	



IG



© IGI 2020, International Gemological Institute

FD - 10 20



THIS DOCUMENT WAS PRODUCED WITH THE FOLLOWING SECURITY MEASURES: SPECIAL DOCUMENT PAPER, INK SCREENS, WATERMARK, BACKGROUND DESIGNS, HOLOGRAM AND OTHER SECURITY FEATURES NOT LISTED AND DO EXCEED DOCUMENT SECURITY INDUSTRY GUIDELINES

JULY 4, 2025 G Report No LG720533250 ROUND BRILLIANT	6.95 - 6.40 X 5.31 MM Carat Weight Color Grade Clarity Grade Cut Grade Depth Table Girdle	2.41 CARATS D VS 2 IDEAL 61.9% 57% Medium to Slightly Thick (Faceted)	Potted EXCELLENT EXCELLENT NONE 1691 LG720533250	Clean Polished Symmetry Fluorescence Inscriptions(s)	Comments: GROWN BY AFGROW As Grown - No indication of post-growth treatment. This Laboratory Grown Diamond was created by High Pressure High Temperature (HPHT) growth process.
--	--	---	--	--	--