

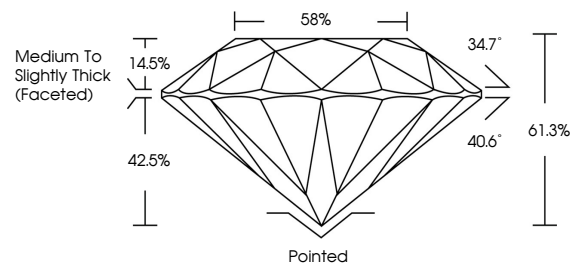


ELECTRONIC COPY

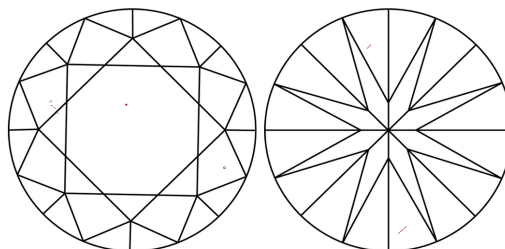
LABORATORY GROWN DIAMOND REPORT

LG720533643
Report verification at igi.org

PROPORTIONS



CLARITY CHARACTERISTICS



KEY TO SYMBOLS

Red symbols indicate internal characteristics.
Green symbols indicate external characteristics.

COLOR

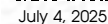
D E F G H I J Faint Very Light Light

CLARITY

IF WS¹⁻² VS¹⁻² SI¹⁻² |¹⁻³

Internally Flawless	Very Very Slightly Included	Very Slightly Included	Slightly Included	Included
------------------------	--------------------------------	---------------------------	----------------------	----------

LABORATORY GROWN DIAMOND REPORT

IGI Report Number **LG720533643**Description **LABORATORY GROWN DIAMOND**Shape and Cutting Style **ROUND BRILLIANT**

Measurements 8.95 - 9.01 X 5.51 MM

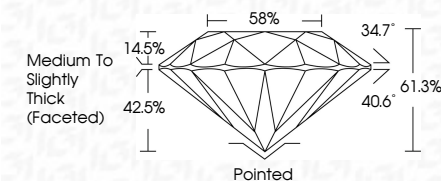
GRADING RESULTS

Carat Weight **2.75 CARATS**

Color Grade F

Clarity Grade VS 1

Cut Grade **IDEAL**



ADDITIONAL GRADING INFORMATION

Polish **EXCELLENT**Symmetry **EXCELLENT**Fluorescence **NONE**Inscription(s) LG720533643

Comments: This Laboratory Grown Diamond was created by Chemical Vapor Deposition (CVD) growth process.
Type IIa



© IGI 2020, International Gemological Institute

FD - 10 20

www.igi.org

THIS DOCUMENT WAS PRODUCED WITH THE FOLLOWING SECURITY MEASURES: SPECIAL DOCUMENT PAPER, INK SCREENS, WATERMARK, BACKGROUND DESIGNS, HOLOGRAM AND OTHER SECURITY FEATURES NOT LISTED AND DO EXCEED DOCUMENT SECURITY INDUSTRY GUIDELINE

July 4, 2025
IGI Report No LG720533643
ROUND BRILLIANT

9.95 - 9.01 X 5.51 MM	
Carat Weight	2.76 CARATS
Color Grade	F
Clarity Grade	VS 1
Cut Grade	IDEAL
Depth	61.3%
Table	59%
Girdle	Medium to slightly Thick (faceted)
Culet	Pointed
Polish	EXCELLENT
Symmetry	EXCELLENT
Fluorescence	NONE
Report #	45611370833443

Comments:
This Laboratory Grown Diamond was created by Chemical Vapor Deposition (CVD) growth process.