



**ELECTRONIC COPY**

## LABORATORY GROWN DIAMOND REPORT

July 30, 2025	
IGI Report Number	LG720538798
Description	LABORATORY GROWN DIAMOND
Shape and Cutting Style	ROUND BRILLIANT
Measurements	7.52 - 7.55 X 4.72 MM

## GRADING RESULTS

Carat Weight	1.67 CARAT
Color Grade	D
Clarity Grade	VVS 2
Cut Grade	EXCELLENT

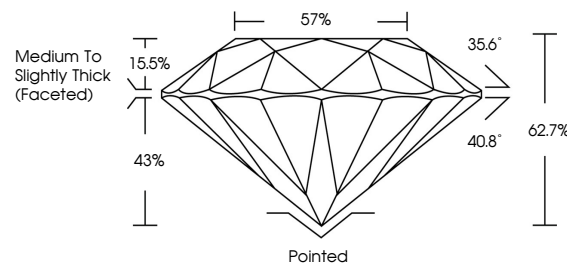
### ADDITIONAL GRADING INFORMATION

Polish	EXCELLENT
Symmetry	EXCELLENT
Fluorescence	NONE
Inscription(s)	 LG720538798

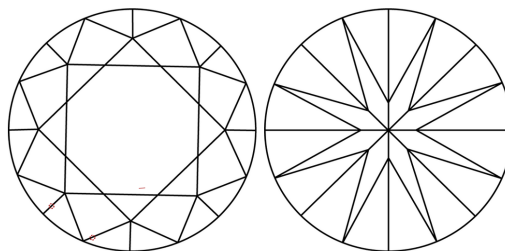
Comments: As Grown - No indication of post-growth treatment.  
This Laboratory Grown Diamond was created by High Pressure High Temperature (HPHT) growth process.  
Type II

LG720538798  
Report verification at [igi.org](https://igi.org)

## PROPORTIONS

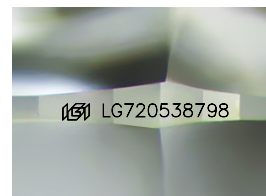


## CLARITY CHARACTERISTICS



## KEY TO SYMBOLS

Red symbols indicate internal characteristics.  
Green symbols indicate external characteristics.



Sample Image Used

**COLOR**

D E F G H I J Faint Very Light Light

## CLARITY

IF      WS<sup>1-2</sup>      VS<sup>1-2</sup>      S<sup>1-2</sup>      |<sup>1-3</sup>

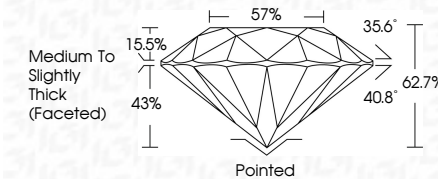
Internally Flawless	Very Very Slightly Included	Very Slightly Included	Slightly Included	Included
------------------------	--------------------------------	---------------------------	----------------------	----------



July 30, 2025	
IGI Report Number	LG720538798
Description	LABORATORY GROWN DIAMOND
Shape and Cutting Style	ROUND BRILLIANT
Measurements	7.52 - 7.55 X 4.72 MM

## GRADING RESULTS

Carat Weight	1.67 CARAT
Color Grade	D
Clarity Grade	VVS 2
Cut Grade	EXCELLENT



### ADDITIONAL GRADING INFORMATION

Polish	EXCELLENT
Symmetry	EXCELLENT
Fluorescence	NONE
Inscription(s)	<del>LG</del> LG720538798
Comments: As Grown - No indication of post-growth treatment.	
This Laboratory Grown Diamond was created by High Pressure High Temperature (HPHT) growth process.	
Type II	



© IGI 2020, International Gemological Institute

FD - 10 20



THIS DOCUMENT WAS PRODUCED WITH THE FOLLOWING SECURITY MEASURES: SPECIAL DOCUMENT PAPER, INK SCREENS, WATERMARK, BACKGROUND DESIGNS, HOLOGRAM AND OTHER SECURITY FEATURES NOT LISTED AND DO EXCEED DOCUMENT SECURITY INDUSTRY GUIDELINES

**www.igi.org**

