



ELECTRONIC COPY

LABORATORY GROWN DIAMOND REPORT

July 5, 2025	
IGI Report Number	LG720550417
Description	LABORATORY GROWN DIAMOND
Shape and Cutting Style	ROUND BRILLIANT
Measurements	8.86 - 8.91 X 5.53 MM

GRADING RESULTS

Carat Weight	2.68 CARATS
Color Grade	D
Clarity Grade	VVS 2
Cut Grade	IDEAL

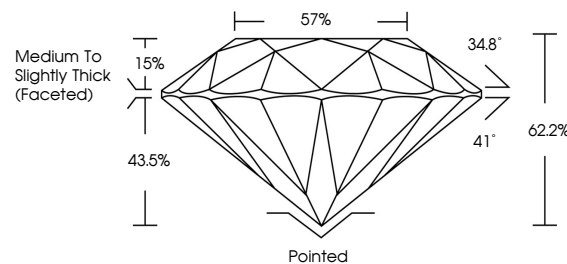
ADDITIONAL GRADING INFORMATION

Polish	EXCELLENT
Symmetry	EXCELLENT
Fluorescence	NONE
Inscription(s)	 LG720550417

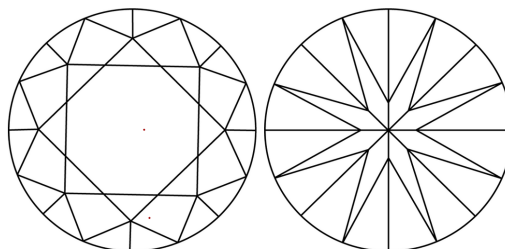
Comments: HEARTS & ARROWS
This Laboratory Grown Diamond was created by
Chemical Vapor Deposition (CVD) growth process.
Type IIa

LG720550417
Report verification at igi.org

PROPORTIONS



CLARITY CHARACTERISTICS

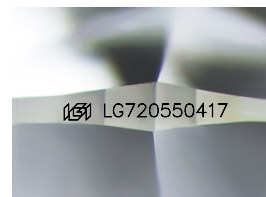


KEY TO SYMBOLS

Red symbols indicate internal characteristics.
Green symbols indicate external characteristics.



www.igi.org



Sample Image Used

COLOR

D E F G H I J Faint Very Light Light

CLARITY

IF VWS¹⁻² VS¹⁻² SI¹⁻² I¹⁻³

Internally Flawless	Very Very Slightly Included	Very Slightly Included	Slightly Included	Included
------------------------	--------------------------------	---------------------------	----------------------	----------



© IGI 2020, International Gemological Institute

FD - 10 20

THIS DOCUMENT WAS PRODUCED WITH THE FOLLOWING SECURITY MEASURES: SPECIAL DOCUMENT PAPER, INK SCREENS, WATERMARK, BACKGROUND DESIGNS, HOLOGRAM AND OTHER SECURITY FEATURES NOT LISTED AND DO EXCEED DOCUMENT SECURITY INDUSTRY GUIDELINES.

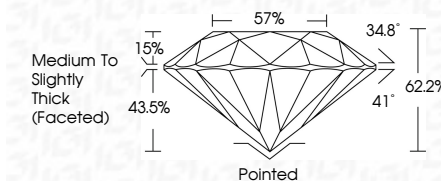
LABORATORY GROWN DIAMOND REPORT



July 5, 2025	
IGI Report Number	LG720550417
Description	LABORATORY GROWN DIAMOND
Shape and Cutting Style	ROUND BRILLIANT
Measurements	8.86 - 8.91 X 5.53 MM

GRADING RESULTS

Carat Weight	2.68 CARATS
Color Grade	D
Clarity Grade	VVS 2
Cut Grade	IDEAL



ADDITIONAL GRADING INFORMATION

Polish	EXCELLENT
Symmetry	EXCELLENT
Fluorescence	NONE
Inscription(s)	LG LG720550417
Comments: HEARTS & ARROWS	
This Laboratory Grown Diamond was created by Chemical Vapor Deposition (CVD) growth process.	
Type IIa	



JUN 5, 2025 IGI Report No. LG720550417 ROUND BRILLIANT	2.48 CARATS D	6.88 - 6.91 X 5.33 MM Color Weight Color Grade Clarity Grade Cut Grade Depth Table Girdle Culet Polish Symmetry Fluorescence Inscription(s)	VS2 IDEAL 62.2% 57% Medium to slightly Thick Faceted Pointed EXCELLENT EXCELLENT NONE 689 LG720550417	Comments: This Laboratory Grown Diamond was created by Chemical Vapor Deposition (CVD) growth process.
--	------------------	---	---	---