



ELECTRONIC COPY

LABORATORY GROWN DIAMOND REPORT

LG720554626
Report verification at igi.org

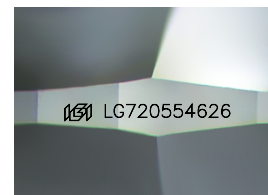
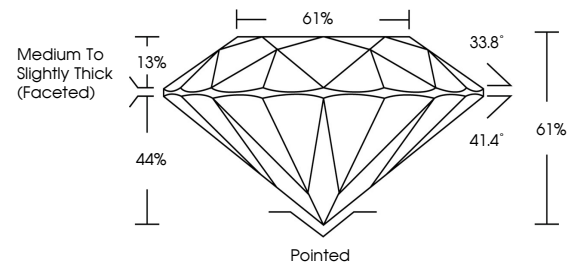
July 4, 2025	
IGI Report Number	LG720554626
Description	LABORATORY GROWN DIAMOND
Shape and Cutting Style	ROUND BRILLIANT
Measurements	7.37 - 7.44 X 4.52 MM
GRADING RESULTS	
Carat Weight	1.52 CARAT
Color Grade	D
Clarity Grade	VS 1
Cut Grade	EXCELLENT

ADDITIONAL GRADING INFORMATION

Polish	VERY GOOD
Symmetry	EXCELLENT
Fluorescence	NONE
Inscription(s)	 LG720554626

Comments: This Laboratory Grown Diamond was created by Chemical Vapor Deposition (CVD) growth process.
Type IIa

PROPORTIONS



Sample Image Used

COLOR

D E F G H I J Faint Very Light Light

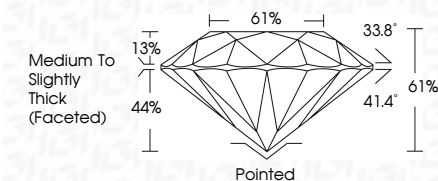
CLARITY

IF	VS ¹⁻²	VS ¹⁻²	SI ¹⁻²	I ¹⁻³
Internally Flawless	Very Very Slightly Included	Very Slightly Included	Slightly Included	Included

LABORATORY GROWN DIAMOND REPORT



July 4, 2025	
IGI Report Number	LG720554626
Description	LABORATORY GROWN DIAMOND
Shape and Cutting Style	ROUND BRILLIANT
Measurements	7.37 - 7.44 X 4.52 MM
GRADING RESULTS	
Carat Weight	1.52 CARAT
Color Grade	D
Clarity Grade	VS 1
Cut Grade	EXCELLENT



ADDITIONAL GRADING INFORMATION

Polish	VERY GOOD
Symmetry	EXCELLENT
Fluorescence	NONE
Inscription(s)	 LG720554626
<p>Comments: This Laboratory Grown Diamond was created by Chemical Vapor Deposition (CVD) growth process.</p> <p>Type IIa</p>	



© IGI 2020, International Gemological Institute

FD - 10 20

www.igi.org



THIS DOCUMENT WAS PRODUCED WITH THE FOLLOWING SECURITY MEASURES: SPECIAL DOCUMENT PAPER, INK SCREENS, WATERMARK, BACKGROUND DESIGNS, HOLOGRAM AND OTHER SECURITY FEATURES NOT LISTED AND DO EXCEED DOCUMENT SECURITY INDUSTRY GUIDELINES

July 4, 2025
GJ Report No | G720554626

Report No 16770554626	1.52 CARAT	D	VS 1	EXCELLENT	01%	01%	Medium to Slightly Thick (Faceted)	Pointed	VERY GOOD	EXCELLENT	NONE	Color L720554626
ROUND BRILLIANT	7.37 - 7.44 X 4.52 MM	Carat Weight	Color Grade	Clarity Grade	Cut Grade	Depth	Table	Girdle	Culet	Polish	Symmetry	Fluorescence

Comments:
This Laboratory Grown Diamond was created by Chemical Vapor Deposition (CVD) growth process.