

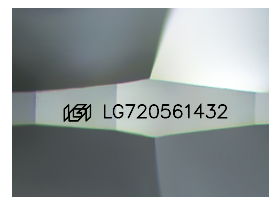
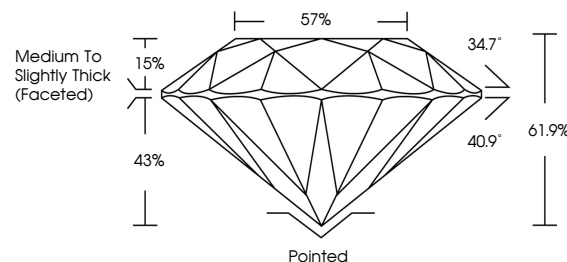


ELECTRONIC COPY

LABORATORY GROWN DIAMOND REPORT

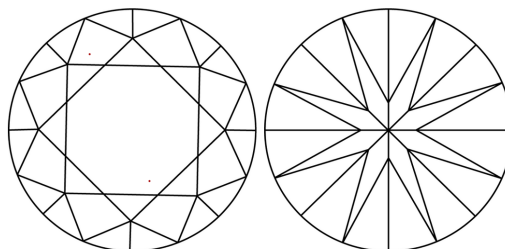
LG720561432
Report verification at lgi.org

PROPORTIONS



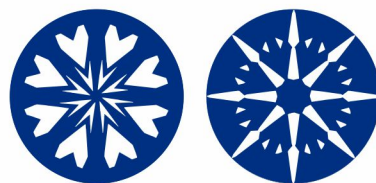
Sample Image Used

CLARITY CHARACTERISTICS



KEY TO SYMBOLS

Red symbols indicate internal characteristics.
Green symbols indicate external characteristics.



www.igi.org

LABORATORY GROWN DIAMOND REPORT



July 9, 2025

IGI Report Number **LG720561432**Description **LABORATORY GROWN DIAMOND**Shape and Cutting Style **ROUND BRILLIANT**

Measurements 10.16 - 10.19 X 6.30 MM

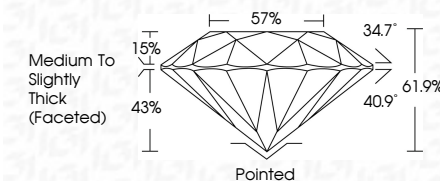
GRADING RESULTS

Carat Weight **4.03 CARATS**

Color Grade E

Clarity Grade **VVS 2**

Cut Grade **IDEAL**



ADDITIONAL GRADING INFORMATION

Polish EXCELLENT

Symmetry **EXCELLENT**Fluorescence **NONE**Inscription(s)  LG720561432

Comments: HEARTS & ARROWS

This Laboratory Grown Diamond was created by Chemical Vapor Deposition (CVD) growth process.
Type IIa



July 9, 2025	10.16 - 10.19 X 6.30 MM	Carat Weight	4.03 CARATS
GI Report No. LG720561432		Color Grade	E
ROUND BRILLIANT		Clarity Grade	VVS 2
		Cut Grade	IDEAL
		Depth	61.2%
		Table	57%
		Girdle	Medium to Slightly Thick (Faceted)
		Culet	Pointed
		Polish	EXCELLENT
		Symmetry	EXCELLENT
		Fluorescence	NONE
		Inscriptions(s)	lgj LG720561432

Comments:
 HEARST & ARROWS
 This Laboratory Grown Diamond was
 created by Chemical Vapor Deposition
 (CVD) growth process.

© IGI 2020, International Gemological Institute

FD - 10 20



THIS DOCUMENT WAS PRODUCED WITH THE FOLLOWING SECURITY MEASURES: SPECIAL DOCUMENT PAPER, INK SCREENS, WATERMARK, BACKGROUND DESIGNS, HOLOGRAM AND OTHER SECURITY FEATURES NOT LISTED AND DO EXCEED DOCUMENT SECURITY INDUSTRY GUIDELINE