

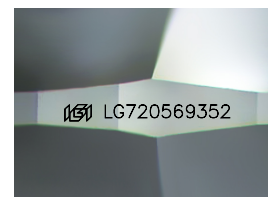
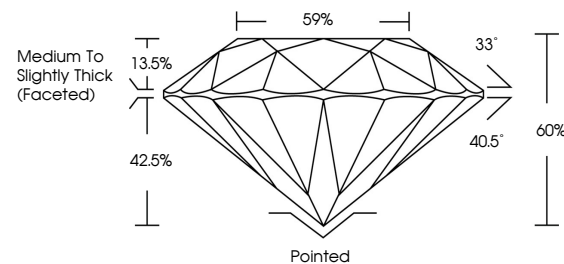


ELECTRONIC COPY

LABORATORY GROWN DIAMOND REPORT

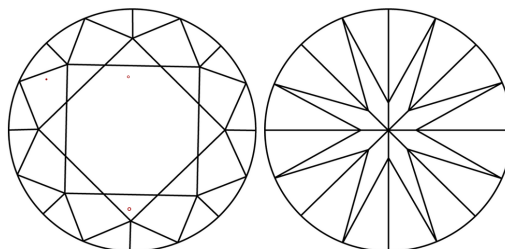
LG720569352
Report verification at igi.org

PROPORTIONS



Sample Image Used

CLARITY CHARACTERISTICS



KEY TO SYMBOLS

Red symbols indicate internal characteristics.
Green symbols indicate external characteristics.

COLOR

D E F G H I J Faint Very Light Light

CLARITY

IF WS¹⁻² VS¹⁻² SI¹⁻² |¹⁻³

Internally Flawless	Very Very Slightly Included	Very Slightly Included	Slightly Included	Included
------------------------	--------------------------------	---------------------------	----------------------	----------

LABORATORY GROWN DIAMOND REPORT



July 6, 2025

IGI Report Number **LG720569352**Description **LABORATORY GROWN DIAMOND**Shape and Cutting Style **ROUND BRILLIANT**

Measurements 8.16 - 8.22 X 4.90 MM

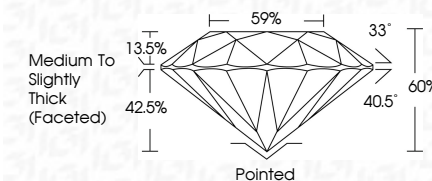
GRADING RESULTS

Carat Weight **2.02 CARATS**

Color Grade **F**

Clarity Grade VS 1

Cut Grade **IDEAL**



ADDITIONAL GRADING INFORMATION

Polish EXCELLENT

Symmetry **EXCELLENT**Fluorescence **NONE**Inscription(s)  LG720569352

Comments: This Laboratory Grown Diamond was created by Chemical Vapor Deposition (CVD) growth process.
Type IIa



© IGI 2020, International Gemological Institute

FD - 10 20

www.igi.org



THIS DOCUMENT WAS PRODUCED WITH THE FOLLOWING SECURITY MEASURES: SPECIAL DOCUMENT PAPER, INK SCREENS, WATERMARK, BACKGROUND DESIGNS, HOLOGRAM AND OTHER SECURITY FEATURES NOT LISTED AND DO EXCEED DOCUMENT SECURITY INDUSTRY GUIDELINE

JULY 6, 2025 GI Report No. LG720569382 ROUND BRILLIANT	13.16 - 13.22 X 9.90 MM Carat Weight Color Grade VS 1 IDEAL 60% 89% Medium to Slightly Thick (Faceted)	Polished EXCELLENT EXCELLENT NONE #691 LG720569382
--	--	--

Comments:
 This is a Very Good Diamond was
 created by Chemical Vapor Deposition
 (CVD) growth process.
 Type IIa