



ELECTRONIC COPY

LABORATORY GROWN DIAMOND REPORT

July 9, 2025	
IGI Report Number	LG720572410
Description	LABORATORY GROWN DIAMOND
Shape and Cutting Style	ROUND BRILLIANT
Measurements	10.25 - 10.29 X 6.27 MM

GRADING RESULTS

Carat Weight	4.05 CARATS
Color Grade	E
Clarity Grade	VVS 2
Cut Grade	IDEAL

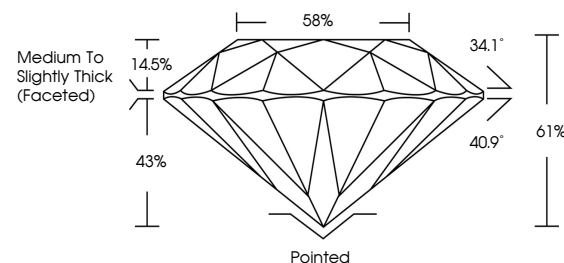
ADDITIONAL GRADING INFORMATION

Polish	EXCELLENT
Symmetry	EXCELLENT
Fluorescence	NONE
Inscription(s)	151 LG720572410

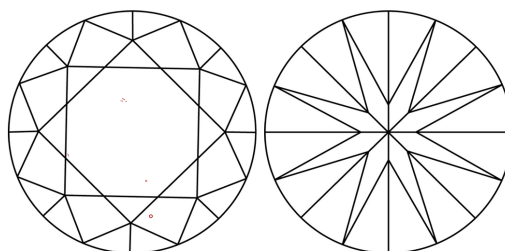
Comments: HEARTS & ARROWS
This Laboratory Grown Diamond was created by
Chemical Vapor Deposition (CVD) growth process.
Type IIa

LG720572410
Report verification at igi.org

PROPORTIONS

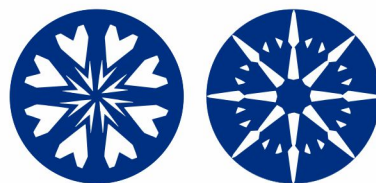


CLARITY CHARACTERISTICS

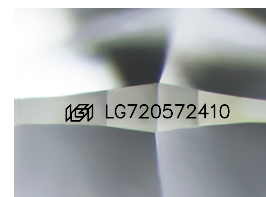


KEY TO SYMBOLS

Red symbols indicate internal characteristics.
Green symbols indicate external characteristics.



www.igi.org



Sample Image Used

COLOR

D E F G H I J Faint Very Light Light

CLARITY

IF VWS¹⁻² VS¹⁻² SI¹⁻² I¹⁻³

Internally Flawless	Very Very Slightly Included	Very Slightly Included	Slightly Included	Included
------------------------	--------------------------------	---------------------------	----------------------	----------



© IGI 2020, International Gemological Institute

FD - 10 20

THIS DOCUMENT WAS PRODUCED WITH THE FOLLOWING SECURITY MEASURES: SPECIAL DOCUMENT PAPER, INK SCREENS, WATERMARK, BACKGROUND DESIGNS, HOLOGRAM AND OTHER SECURITY FEATURES NOT LISTED AND DO EXCEED DOCUMENT SECURITY INDUSTRY GUIDELINES.

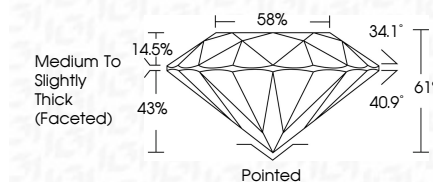
LABORATORY GROWN DIAMOND REPORT



July 9, 2025	
IGI Report Number	LG270572410
Description	LABORATORY GROWN DIAMOND
Shape and Cutting Style	ROUND BRILLIANT
Measurements	10.25 - 10.29 X 6.27 MM

GRADING RESULTS

Carat Weight	4.05 CARATS
Color Grade	E
Clarity Grade	VVS 2
Cut Grade	IDEAL



ADDITIONAL GRADING INFORMATION

Polish	EXCELLENT
Symmetry	EXCELLENT
Fluorescence	NONE
Inscription(s)	LG LG720572410
Comments: HEARTS & ARROWS This Laboratory Grown Diamond was created by Chemical Vapor Deposition (CVD) growth process. Type IIa	



July 9, 2025	Report No. LG720572410	4.05 CARATS	E	VVS 2	51%	55%	Medium to slightly Thick (Grainee)	Pointed	EXCELLENT	EXCELLENT	NONE	lgf1 LG720572410	Comments: HEARST & ARROW'S The Laboratory Grown Diamond was found to be a Type IIa with Vapor Deposition (VD) growth process. Type IIa
	ROUND BRILLIANT	10.25 - 10.29 X 6.27 MM		IDEAL									
	Color Grade	Carat Weight		Clarity Grade									
	Color Grade	Color Grade		Cut Grade									
	Depth	Table		Girdle									