



**ELECTRONIC COPY**

## LABORATORY GROWN DIAMOND REPORT

July 14, 2025	
IGI Report Number	LG720579049
Description	LABORATORY GROWN DIAMOND
Shape and Cutting Style	ROUND BRILLIANT
Measurements	7.96 - 8.00 X 4.93 MM

## GRADING RESULTS

Carat Weight	1.94 CARAT
Color Grade	FANCY INTENSE PINK
Clarity Grade	VS 1
Cut Grade	IDEAL

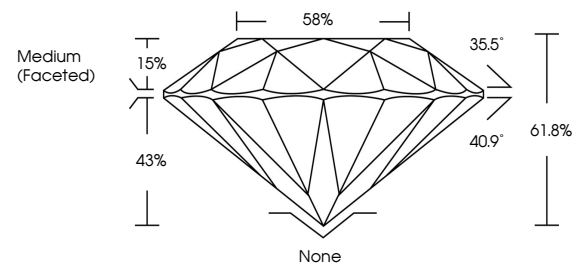
### ADDITIONAL GRADING INFORMATION

Polish	EXCELLENT
Symmetry	EXCELLENT
Fluorescence	STRONG
Inscription(s)	 LG720579049

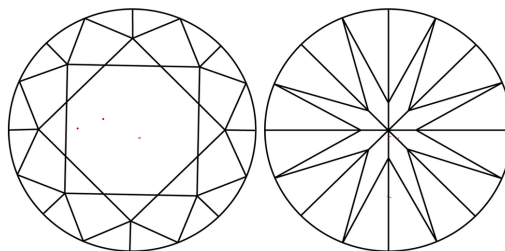
Comments: This Laboratory Grown Diamond was created by Chemical Vapor Deposition (CVD) growth process.  
Indications of post-growth treatment.

LG720579049  
Report verification at [igi.org](https://igi.org)

## PROPORTIONS

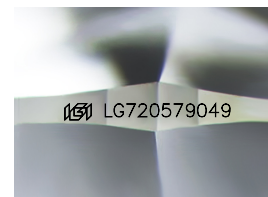


## CLARITY CHARACTERISTICS



## KEY TO SYMBOLS

Red symbols indicate internal characteristics.  
Green symbols indicate external characteristics.



Sample Image Used

**COLOR**

D E F G H I J Faint Very Light Light

## CLARITY

IF                      VS<sup>1-2</sup>                      VS<sup>1-2</sup>                      SI<sup>1-2</sup>                      |<sup>1-3</sup>

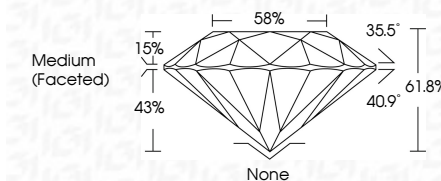
Internally Flawless	Very Very Slightly Included	Very Slightly Included	Slightly Included	Included
------------------------	--------------------------------	---------------------------	----------------------	----------



July 14, 2025	
IGI Report Number	LG720579049
Description	LABORATORY GROWN DIAMOND
Shape and Cutting Style	ROUND BRILLIANT
Measurements	7.96 - 8.00 X 4.93 MM

## GRADING RESULTS

Carat Weight	1.94 CARAT
Color Grade	FANCY INTENSE PINK
Clarity Grade	VS 1
Cut Grade	IDEAL



### ADDITIONAL GRADING INFORMATION

Polish	EXCELLENT
Symmetry	EXCELLENT
Fluorescence	STRONG
Inscription(s)	 LG720579049

Comments: This Laboratory Grown Diamond was created by Chemical Vapor Deposition (CVD) growth process.  
Indications of post-growth treatment.



© IGI 2020, International Gemological Institute

FD - 10 20



THIS DOCUMENT WAS PRODUCED WITH THE FOLLOWING SECURITY MEASURES: SPECIAL DOCUMENT PAPER, INK SCREENS, WATERMARK, BACKGROUND DESIGNS, HOLOGRAM AND OTHER SECURITY FEATURES NOT LISTED AND DO EXCEED DOCUMENT SECURITY INDUSTRY GUIDELINES

**www.igi.org**

July 14, 2025  
GJ Report No 16720579049

<b>Report No:</b>	<b>1670357049</b>
<b>Grade</b>	<b>ROUND BRILLIANT</b>
<b>Weight</b>	<b>7.96 - 8.00 X 4.93 MM</b>
<b>Color</b>	<b>FANCY INTENSE PINK</b>
<b>Clarity</b>	<b>VSI 1</b>
<b>Cut</b>	<b>IDEAL</b>
<b>Depth</b>	<b>61.8%</b>
<b>Table</b>	<b>59%</b>
<b>Girdle</b>	<b>Medium (Faceted)</b>
<b>Culet</b>	<b>None</b>
<b>Polish</b>	<b>EXCELLENT</b>
<b>Symmetry</b>	<b>EXCELLENT</b>
<b>Fluorescence</b>	<b>STRONG</b>

**Comments:**  
This Laboratory Grown Diamond was created by Chemical Vapor Deposition (CVD) growth process.