

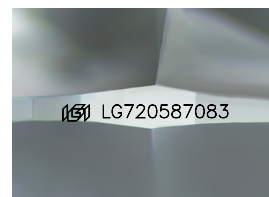
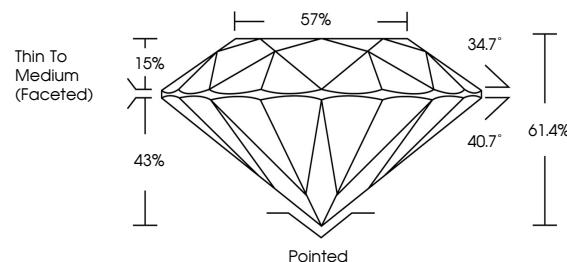


ELECTRONIC COPY

LABORATORY GROWN DIAMOND REPORT

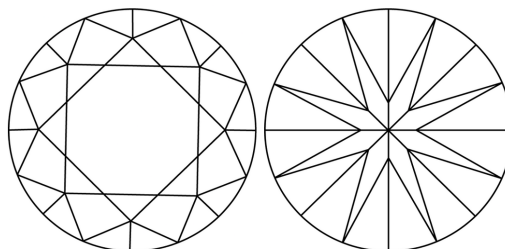
LG720587083
Report verification at lgi.org

PROPORTIONS



Sample Image Used

CLARITY CHARACTERISTICS



KEY TO SYMBOLS

Red symbols indicate internal characteristics.
Green symbols indicate external characteristics.



www.igi.org

LABORATORY GROWN DIAMOND REPORT



July 17, 2025

IGI Report Number **LG720587083**

Description	LABORATORY GROWN DIAMOND
-------------	--------------------------

Shape and Cutting Style **ROUND BRILLIANT**

Measurements	6.88 - 6.91 X 4.23 MM
--------------	-----------------------

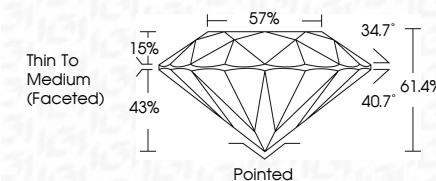
GRADING RESULTS

Carat Weight 1.23 CARAT

Color Grade

Clarity Grade **INTERNALLY FLAWLESS**

Cut Grade **IDEAL**



ADDITIONAL GRADING INFORMATION

Polish **EXCELLENT**Symmetry **EXCELLENT**Fluorescence **NONE**Inscription(s) LG720587083

Comments: HEARTS & ARROWS

As Grown - No indication of post-growth treatment.

This Laboratory Grown Diamond was created by High Pressure High Temperature (HPHT) growth process.

Type II



July 17, 2025
GI Report No LG720587083
ROUND BRILLIANT

6.88 - 6.91 X 4.23 MM	1.23 CARAT	D
Carat Weight	IF	
Color Grade	IDEAL	
Clarity Grade	61.4%	
Depth	57%	
Table	Thin To Medium	
Girdle	(Faceted)	
Culet	Pointed	
Polish	EXCELLENT	
Symmetry	EXCELLENT	
Fluorescence	NONE	
Comments	See LCT0250202	

Comments:
HEARTS & ARROWS
As Grown - No Indication of post-growth
treatment
This Laboratory Grown Diamond was
created by High Pressure High
temperature (HPHT) growth process.

© IGI 2020, International Gemological Institute

FD - 10 20



THIS DOCUMENT WAS PRODUCED WITH THE FOLLOWING SECURITY MEASURES: SPECIAL DOCUMENT PAPER, INK SCREENS, WATERMARK, BACKGROUND DESIGNS, HOLOGRAM AND OTHER SECURITY FEATURES NOT LISTED AND DO EXCEED DOCUMENT SECURITY INDUSTRY GUIDELINE