



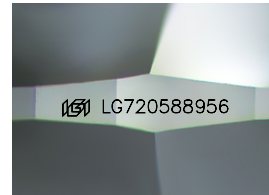
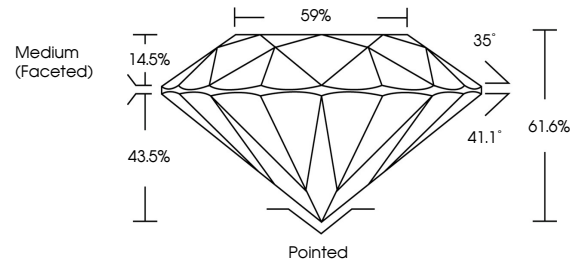
**INTERNATIONAL
GEMOLOGICAL
INSTITUTE**

ELECTRONIC COPY

LABORATORY GROWN DIAMOND REPORT

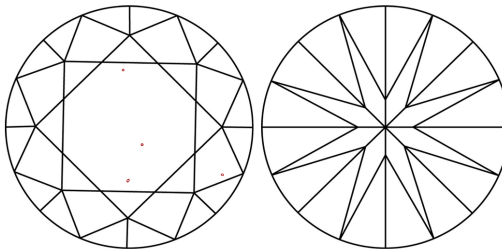
LG720588956
Report verification at igi.org

PROPORTIONS



Sample Image Used

CLARITY CHARACTERISTICS



KEY TO SYMBOLS

Red symbols indicate internal characteristics.
Green symbols indicate external characteristics.

COLOR

D E F G H I J Faint Very Light Light

CLARITY

IF WS¹⁻² VS¹⁻² SI¹⁻² I¹⁻³

Internally Flawless	Very Very Slightly Included	Very Slightly Included	Slightly Included	Included
------------------------	--------------------------------	---------------------------	----------------------	----------



© IGI 2020, International Gemological Institute

FD - 10 20

www.igi.org

LABORATORY GROWN DIAMOND REPORT



July 9, 2025

IGI Report Number **LG720588956**

Description	LABORATORY GROWN DIAMOND
-------------	--------------------------

Shape and Cutting Style **ROUND BRILLIANT**

Measurements	8.14 - 8.16 X 5.02 MM
--------------	-----------------------

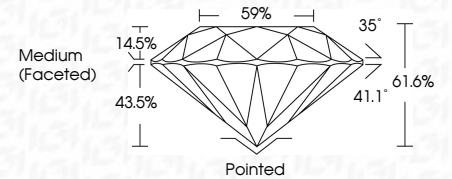
GRADING RESULTS

Carat Weight **2.05 CARATS**

Color Grade	F
-------------	---

Clarity Grade VS 1

Cut Grade **IDEAL**



ADDITIONAL GRADING INFORMATION

Polish **EXCELLENT**Symmetry **EXCELLENT**Fluorescence **NONE**Inscription(s) LG720588956

Comments: This Laboratory Grown Diamond was created by Chemical Vapor Deposition (CVD) growth process.
Type IIa



IGI

July 9, 2025	IGI Report No L672058965		ROUND BRILLIANT		2.05 CARATS	
	18.14 - 8.16 X 5.02 MM				F	
	Carat Weight	Color Grade	Clarity Grade	Cut Grade	Depth	VS 1
						IDEAL
						61.6%
						69%
						Medium (Faceted)
	Culet	Polish	Symmetry	Fluorescence	Inscriptions(s)	Painted
						EXCELLENT
						EXCELLENT
						NONE
						IGI L672058965
Comments:						
This Laboratory Grown Diamond was created by Chemical Vapor Deposition (CVD) growth process.						
Type IId						