

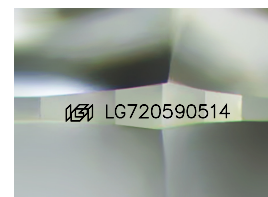
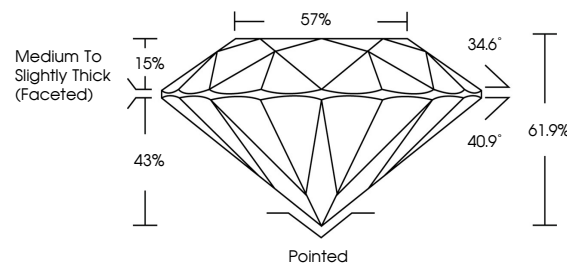


ELECTRONIC COPY

LABORATORY GROWN DIAMOND REPORT

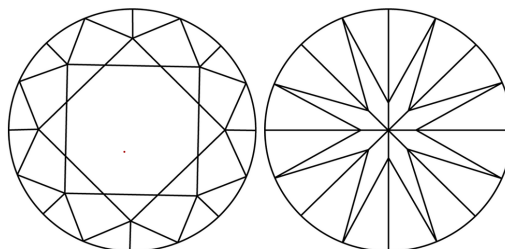
LG720590514
Report verification at lgi.org

PROPORTIONS



Sample Image Used

CLARITY CHARACTERISTICS



KEY TO SYMBOLS

Red symbols indicate internal characteristics.
Green symbols indicate external characteristics.



www.igi.org

COLOR

D E F G H I J Faint Very Light Light

CLARITY

IF WS¹⁻² VS¹⁻² SI¹⁻² |¹⁻³

Internally Flawless	Very Very Slightly Included	Very Slightly Included	Slightly Included	Included
------------------------	--------------------------------	---------------------------	----------------------	----------



© IGI 2020, International Gemological Institute

FD - 10 20

THIS DOCUMENT WAS PRODUCED WITH THE FOLLOWING SECURITY MEASURES: SPECIAL DOCUMENT PAPER, INK SCREENS, WATERMARK, BACKGROUND DESIGNS, HOLOGRAM AND OTHER SECURITY FEATURES NOT LISTED AND DO EXCEED DOCUMENT SECURITY INDUSTRY GUIDELINE

LABORATORY GROWN DIAMOND REPORT



July 7, 2025

IGI Report Number **LG720590514**Description **LABORATORY GROWN DIAMOND**Shape and Cutting Style **ROUND BRILLIANT**

Measurements 8.37 - 8.42 X 5.20 MM

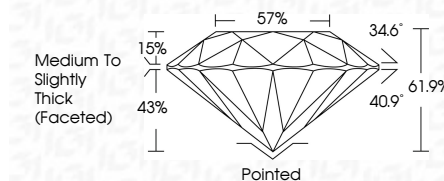
GRADING RESULTS

Carat Weight **2.27 CARATS**

Color Grade D

Clarity Grade WS 1

Cut Grade **IDEAL**



ADDITIONAL GRADING INFORMATION

Polish **EXCELLENT**Symmetry **EXCELLENT**Fluorescence **NONE**Inscription(s) LG720590514

Comments: HEARTS & ARROWS

As Grown - No indication of post-growth treatment.

This Laboratory Grown Diamond was created by High Pressure High Temperature (HPHT) growth process.

Type II



July 7, 2025	2.27 CARATS
GL Report No. LG25050514	
ROUND BRILLIANT	
3.37 - 4.42 X 5.20 MM	
Color Weight	Color Grade
Clarity Grade	D
Cut Grade	VVS 1
Depth	IDEAL
Table	61.9%
Girdle	57%
	Medium to Slightly Thick (Feetted)
Culet	Pointed
Polish	EXCELLENT
Symmetry	EXCELLENT
Fluorescence	NONE
Inscriptions(s)	#69 LG25050514

Comments:

- HEART & ARROWS
- None - No indication of post-growth
- This Laboratory Growth Diamond was created by High Pressure High Temperature (HPHT) growth process.