

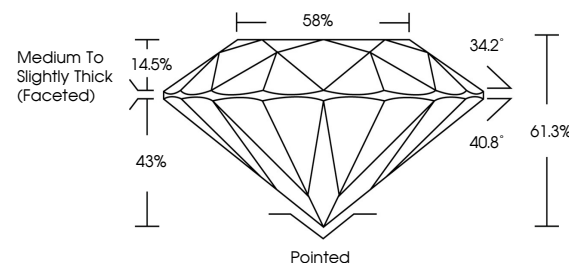


**ELECTRONIC COPY**

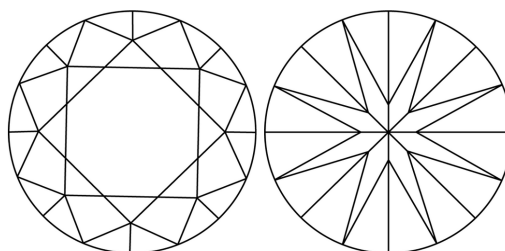
## LABORATORY GROWN DIAMOND REPORT

LG720590547  
Report verification at [igi.org](https://igi.org)

## PROPORTIONS



## CLARITY CHARACTERISTICS



## KEY TO SYMBOLS

Red symbols indicate internal characteristics.  
Green symbols indicate external characteristics.



**www.igi.org**

## COLOR

D E F G H I J Faint Very Light Light

## CLARITY

IF WS<sup>1-2</sup> VS<sup>1-2</sup> SI<sup>1-2</sup> |<sup>1-3</sup>

Internally Flawless	Very Very Slightly Included	Very Slightly Included	Slightly Included	Included
------------------------	--------------------------------	---------------------------	----------------------	----------



© IGI 2020, International Gemological Institute

FD - 10 20

THIS DOCUMENT WAS PRODUCED WITH THE FOLLOWING SECURITY MEASURES: SPECIAL DOCUMENT PAPER, INK SCREENS, WATERMARK, BACKGROUND DESIGNS, HOLOGRAM AND OTHER SECURITY FEATURES NOT LISTED AND DO EXCEED DOCUMENT SECURITY INDUSTRY GUIDELINE

## LABORATORY GROWN DIAMOND REPORT



July 9, 2025

IGI Report Number **LG720590547**Description **LABORATORY GROWN DIAMOND**Shape and Cutting Style **ROUND BRILLIANT**

Measurements 6.54 - 6.58 X 4.02 MM

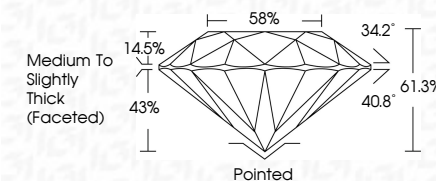
## GRADING RESULTS

Carat Weight 1.06 CARAT

Color Grade D

Clarity Grade **INTERNALLY FLAWLESS**

Cut Grade **IDEAL**



### ADDITIONAL GRADING INFORMATION

Polish EXCELLENT

Symmetry **EXCELLENT**Fluorescence **NONE**Inscription(s)  LG720590547

Comments: HEARTS & ARROWS

As Grown - No indication of post-growth treatment.

This Laboratory Grown Diamond was created by High Pressure High Temperature (HPHT) growth process.

Type II



July 9, 2025	1.06 CARAT
GI Report No. LG72590547	D
ROUND BRILLIANT	IF
	IDEAL
	61.5%
	59%
	Medium To Slightly Thick (faceted)
	Polished
	EXCELLENT
	EXCELLENT
	NONE
	lg7 LG72590547

Comments:

REMARKS & ACRONS

None. No indication of post-growth treatment.

The Laboratory Grown Diamond was created by High Pressure High Temperature (HPHT) growth process.