

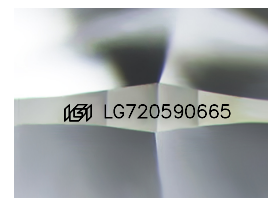
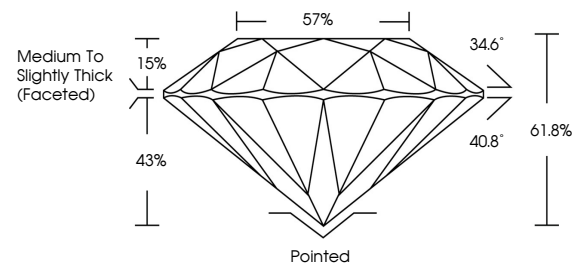


**ELECTRONIC COPY**

## LABORATORY GROWN DIAMOND REPORT

LG720590665  
Report verification at [igi.org](https://igi.org)

## PROPORTIONS



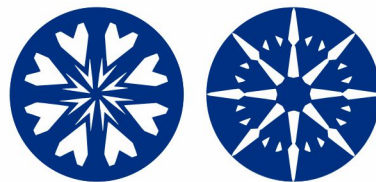
Sample Image Used

## CLARITY CHARACTERISTICS



## KEY TO SYMBOLS

Red symbols indicate internal characteristics.  
Green symbols indicate external characteristics.



**www.igi.org**

## COLOR

D E F G H I J Faint Very Light Light

## CLARITY

IF WS<sup>1-2</sup> VS<sup>1-2</sup> SI<sup>1-2</sup> |<sup>1-3</sup>

Internally Flawless	Very Very Slightly Included	Very Slightly Included	Slightly Included	Included
------------------------	--------------------------------	---------------------------	----------------------	----------



© IGI 2020, International Gemological Institute

FD - 10 20

THIS DOCUMENT WAS PRODUCED WITH THE FOLLOWING SECURITY MEASURES: SPECIAL DOCUMENT PAPER, INK SCREENS, WATERMARK, BACKGROUND DESIGNS, HOLOGRAM AND OTHER SECURITY FEATURES NOT LISTED AND DO EXCEED DOCUMENT SECURITY INDUSTRY GUIDELINE

## LABORATORY GROWN DIAMOND REPORT



July 7, 2025

IGI Report Number **LG720590665**Description **LABORATORY GROWN DIAMOND**Shape and Cutting Style **ROUND BRILLIANT**

Measurements 9.38 - 9.42 X 5.81 MM

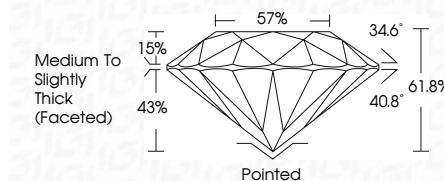
## GRADING RESULTS

Carat Weight **3.17 CARATS**

Color Grade D

Clarity Grade **INTERNALLY FLAWLESS**

Cut Grade **IDEAL**



### ADDITIONAL GRADING INFORMATION

Polish **EXCELLENT**Symmetry **EXCELLENT**

Fluorescence NON

Inscription(s)  LG720590665

Comments: HEARTS & ARROWS

As Grown - No indication of post-growth treatment.

This Laboratory Grown Diamond was created by High Pressure High Temperature (HPHT) growth process.

Type II



DATE: JULY 7, 2025	REPORT NO: LG27590645	ROUND BRILLIANT	3.17 CARATS
GIA Report No. LG27590645		Color Grade	D
ROUND 38 - 4.25 X 5.81 MM		Clarity Grade	IF
		Cut Grade	IDEAL
		Depth	61.8%
		Table	57%
		Girdle	Medium to Slightly Thick (Faceted)
		Culet	Polished
		Polish	EXCELLENT
		Symmetry	EXCELLENT
		Fluorescence	NONE
		Inscriptions	lg9 LG27590645
Comments: - HEART & ARROW - No inclusions - No indication of post-growth treatment - This Laboratory Grown Diamond was created by High Pressure High Temperature (HPHT) growth process.			