

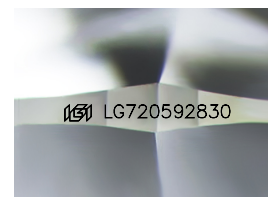
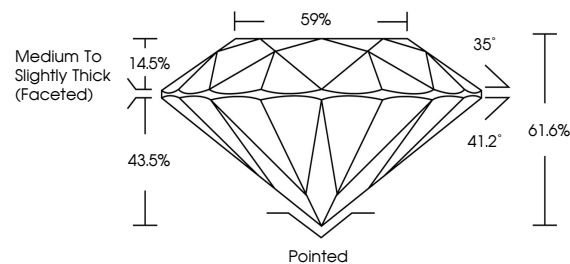


ELECTRONIC COPY

LABORATORY GROWN DIAMOND REPORT

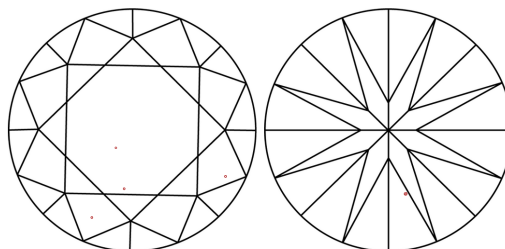
LG720592830
Report verification at igi.org

PROPORTIONS



Sample Image Used

CLARITY CHARACTERISTICS



KEY TO SYMBOLS

Red symbols indicate internal characteristics.
Green symbols indicate external characteristics.

COLOR

D E F G H I J Faint Very Light Light

CLARITY

IF WS¹⁻² VS¹⁻² SI¹⁻² |¹⁻³

Internally Flawless	Very Very Slightly Included	Very Slightly Included	Slightly Included	Included
------------------------	--------------------------------	---------------------------	----------------------	----------

LABORATORY GROWN DIAMOND REPORT



July 9, 2025

IGI Report Number **LG720592830**Description **LABORATORY GROWN DIAMOND**Shape and Cutting Style **ROUND BRILLIANT**

Measurements 9.27 - 9.34 X 5.73 MM

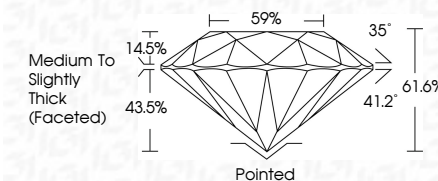
GRADING RESULTS

Carat Weight **3.05 CARATS**

Color Grade E

Clarity Grade VS 1

Cut Grade **IDEAL**



ADDITIONAL GRADING INFORMATION

Polish **EXCELLENT**Symmetry **EXCELLENT**Fluorescence **NONE**Inscription(s) LG720592830

Comments: This Laboratory Grown Diamond was created by Chemical Vapor Deposition (CVD) growth process.

Type IIa



© IGI 2020, International Gemological Institute

FD - 10 20

www.igi.org

THIS DOCUMENT WAS PRODUCED WITH THE FOLLOWING SECURITY MEASURES: SPECIAL DOCUMENT PAPER, INK SCREENS, WATERMARK, BACKGROUND DESIGNS, HOLOGRAM AND OTHER SECURITY FEATURES NOT LISTED AND DO EXCEED DOCUMENT SECURITY INDUSTRY GUIDELINE

JULY 9, 2026	GL Report No LG720592830	ROUND BRILLANT	3.05 CARATS	E	VSI 1	IDEAL	61.6%	59%	Medium to Slightly Thick Faceted	Pointed	EXCELLENT	EXCELLENT	NONE	#68 LG720592830	Comments:
GI Round	27 - 9.34 X 5.73 MM	Color Grade	Clarity Grade	Cut Grade	Depth	Girdle	Fluorescence	Symmetry	Pavilion	Culet	Table	Polish	Fluorescence	Fluorescence	Laboratory Grown Diamond was created by Chemical Vapor Deposition (CVD) growth process.
Weight	Carat Weight	Color Grade	Clarity Grade	Cut Grade	Depth	Girdle	Fluorescence	Symmetry	Pavilion	Culet	Table	Polish	Fluorescence	Type IIA	