



**INTERNATIONAL
GEMOLOGICAL
INSTITUTE**

ELECTRONIC COPY

LABORATORY GROWN DIAMOND REPORT

LG720597504
Report verification at igi.org

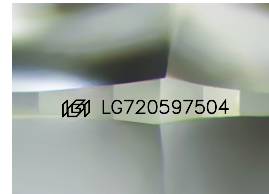
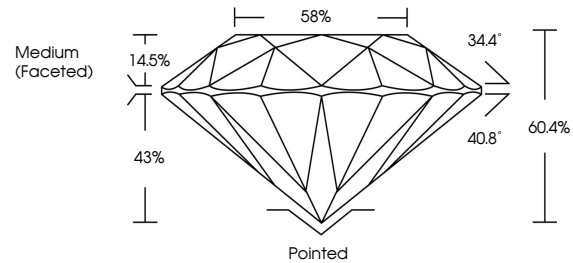
July 9, 2025	
IGI Report Number	LG720597504
Description	LABORATORY GROWN DIAMOND
Shape and Cutting Style	ROUND BRILLIANT
Measurements	12.80 - 12.85 X 7.75 MM
GRADING RESULTS	
Carat Weight	7.74 CARATS
Color Grade	D
Clarity Grade	VS 1
Cut Grade	IDEAL

ADDITIONAL GRADING INFORMATION

Polish	EXCELLENT
Symmetry	EXCELLENT
Fluorescence	NONE
Inscription(s)	 LG720597504

Comments: This Laboratory Grown Diamond was created by Chemical Vapor Deposition (CVD) growth process.
Type IIa

PROPORTIONS



Sample Image Used

COLOR

D E F G H I J Faint Very Light Light

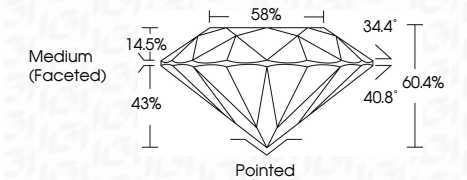
CLARITY

IF	WVS ¹⁻²	VS ¹⁻²	SI ¹⁻²	I ¹⁻³
Internally Flawless	Very Very Slightly Included	Very Slightly Included	Slightly Included	Included

LABORATORY GROWN DIAMOND REPORT



July 9, 2025	
IGI Report Number	LG720597504
Description	LABORATORY GROWN DIAMOND
Shape and Cutting Style	ROUND BRILLIANT
Measurements	12.80 - 12.85 X 7.75 MM
GRADING RESULTS	
Carat Weight	7.74 CARATS
Color Grade	D
Clarity Grade	VS 1
Cut Grade	IDEAL



ADDITIONAL GRADING INFORMATION

Polish	EXCELLENT
Symmetry	EXCELLENT
Fluorescence	NONE
Inscription(s)	 LG720597504
<p>Comments: This Laboratory Grown Diamond was created by Chemical Vapor Deposition (CVD) growth process.</p> <p>Type IIa</p>	



IGI



© IGI 2020, International Gemological Institute

FD - 10 20

www.igi.org

THIS DOCUMENT WAS PRODUCED WITH THE FOLLOWING SECURITY MEASURES: SPECIAL DOCUMENT PAPER, INK SCREENS, WATERMARK BACKGROUND DESIGNS, HOLOGRAM AND OTHER SECURITY FEATURES NOT LISTED AND DO EXCEED DOCUMENT SECURITY INDUSTRY GUIDELINES

July 9, 2025
IGI Report No LG720597504
ROUND BRILLIANT

12.80 - 12.85 X 7.75 MM
Carat Weight 7.74 CARATS

Carat Weight	7.74 CARATS
Color Grade	D

Clarity Grade	VS 1
Cut Grade	IDEAL

Cut Grade	IDEAL
Depth	60.4%
Table	56%

Grille	Medium (Faceted)

	Pointed	Pointed
Culet		
Polish		EXCELLENT

Polish	EXCELLENT
Symmetry	EXCELLENT
Discrepancy	NONE

Fluorescence	NONE
Inscription(s)	1991 LG720597504

Comments:
This Laboratory Grown Diamond was

This Laboratory Grown Diamond was created by Chemical Vapor Deposition (CVD) growth process.

Type IIa (CVD) growth process.