



ELECTRONIC COPY

LABORATORY GROWN DIAMOND REPORT

LG720597515
Report verification at igi.org

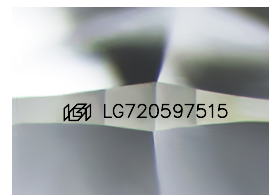
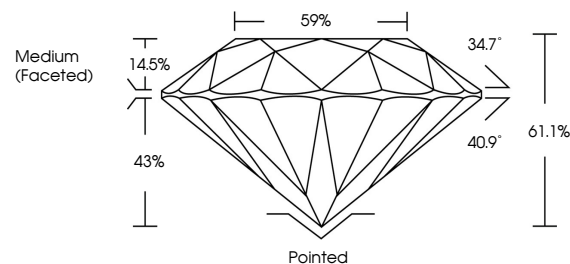
July 8, 2025	
IGI Report Number	LG720597515
Description	LABORATORY GROWN DIAMOND
Shape and Cutting Style	ROUND BRILLIANT
Measurements	6.91 - 6.93 X 4.23 MM
GRADING RESULTS	
Carat Weight	1.24 CARAT
Color Grade	D
Clarity Grade	VS 2
Cut Grade	IDEAL

ADDITIONAL GRADING INFORMATION

Polish	EXCELLENT
Symmetry	EXCELLENT
Fluorescence	NONE
Inscription(s)	15 LG720597515

Comments: This Laboratory Grown Diamond was created by Chemical Vapor Deposition (CVD) growth process.
Type IIa

PROPORTIONS



Sample Image Used

COLOR

D E F G H I J Faint Very Light Light

CLARITY

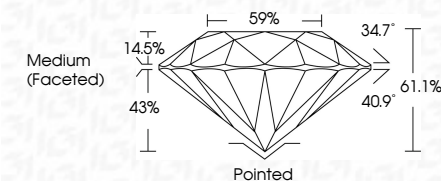
IF VS¹⁻² VS¹⁻² S¹⁻² |¹⁻³

Internally Flawless	Very Very Slightly Included	Very Slightly Included	Slightly Included	Included
------------------------	--------------------------------	---------------------------	----------------------	----------

LABORATORY GROWN DIAMOND REPORT



July 8, 2025	
IGI Report Number	LG720597515
Description	LABORATORY GROWN DIAMOND
Shape and Cutting Style	ROUND BRILLIANT
Measurements	6.91 - 6.93 X 4.23 MM
GRADING RESULTS	
Carat Weight	1.24 CARAT
Color Grade	D
Clarity Grade	VS 2
Cut Grade	IDEAL



ADDITIONAL GRADING INFORMATION

Polish	EXCELLENT
Symmetry	EXCELLENT
Fluorescence	NONE
Inscription(s)	LG LG720597515
<p>Comments: This Laboratory Grown Diamond was created by Chemical Vapor Deposition (CVD) growth process.</p> <p>Type IIa</p>	



© IGI 2020, International Gemological Institute

FD - 10 20



THIS DOCUMENT WAS PRODUCED WITH THE FOLLOWING SECURITY MEASURES: SPECIAL DOCUMENT PAPER, INK SCREENS, WATERMARK, BACKGROUND DESIGNS, HOLOGRAM AND OTHER SECURITY FEATURES NOT LISTED AND DO EXCEED DOCUMENT SECURITY INDUSTRY GUIDELINES

www.igi.org

July 8, 2025
GI Report No LG720597515
ROUND BRILLIANT

9.91 - 6.93 X 4.28 MM	Carat Weight	1.24 CARAT
Color Grade	D	
Clarity Grade	VS 2	
Cut Grade	IDP AL	
Depth	61.1%	
Table	59%	
Girdle	Medium (Faceted)	
Culet	Pointed	
Polish	Excellent	
Symmetry	Excellent	
Fluorescence	None	
Comments:	See Certificate	

Comments:
This Laboratory Grown Diamond was created by Chemical Vapor Deposition (CVD) growth process.