

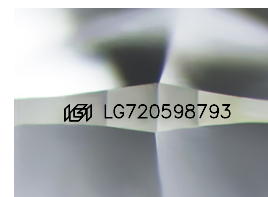
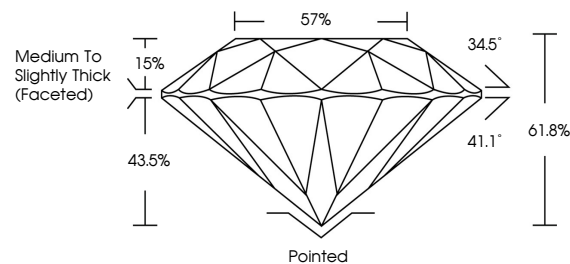


ELECTRONIC COPY

LABORATORY GROWN DIAMOND REPORT

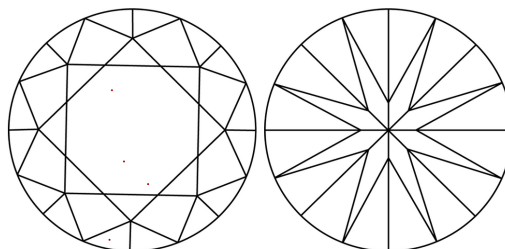
LG720598793
Report verification at igi.org

PROPORTIONS



Sample Image Used

CLARITY CHARACTERISTICS



KEY TO SYMBOLS

Red symbols indicate internal characteristics.
Green symbols indicate external characteristics.

COLOR

D E F G H I J Faint Very Light Light

CLARITY

IF WS¹⁻² VS¹⁻² SI¹⁻² |¹⁻³

Internally Flawless	Very Very Slightly Included	Very Slightly Included	Slightly Included	Included
------------------------	--------------------------------	---------------------------	----------------------	----------



July 11, 2025

IGI Report Number **LG720598793**

Description	LABORATORY GROWN DIAMOND
-------------	--------------------------

Shape and Cutting Style **ROUND BRILLIANT**

Measurements 6.58 - 6.60 X 4.07 MM

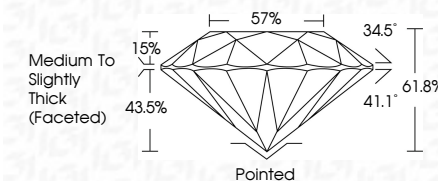
GRADING RESULTS

Carat Weight 1.08 CARAT

Color Grade D

Clarity Grade WS 2

Cut Grade **IDEAL**



ADDITIONAL GRADING INFORMATION

Polish **EXCELLENT**Symmetry **EXCELLENT**Fluorescence **NONE**Inscription(s) LG720598793

Comments: This Laboratory Grown Diamond was created by Chemical Vapor Deposition (CVD) growth process.
Type IIa



© IGI 2020, International Gemological Institute

FD - 10 20

www.igi.org

THIS DOCUMENT WAS PRODUCED WITH THE FOLLOWING SECURITY MEASURES: SPECIAL DOCUMENT PAPER, INK SCREENS, WATERMARK BACKGROUND DESIGNS, HOLOGRAM AND OTHER SECURITY FEATURES NOT LISTED AND DO EXCEED DOCUMENT SECURITY INDUSTRY GUIDELINES

July 11, 2025
GI Report No LG720598793
ROUND BRILLIANT

5.58 - 6.60 X 4.07 MM	1.08 CARAT	D
Carat Weight	VVS 2	IDEAL
Color Grade	61.0%	57%
Clarity Grade	Medium to Slightly Thick (Faceted)	Pointed
Cut Grade		EXCELLENT
Depth		EXCELLENT
Table		NONE
Grade		
Culet		
Polish		
Symmetry		
Fluorescence		

Comments:
This Laboratory Grown Diamond was
created by Chemical Vapor Deposition
(CVD) growth process.