



**ELECTRONIC COPY**

## LABORATORY GROWN DIAMOND REPORT

LG722511323  
Report verification at [igi.org](https://igi.org)

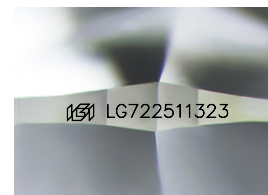
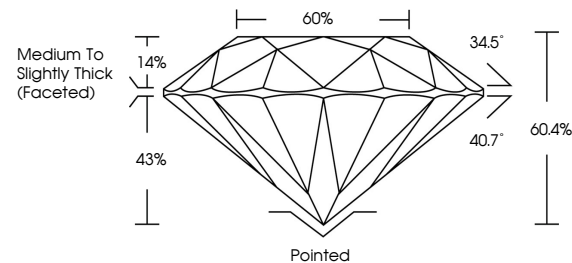
July 12, 2025	
IGI Report Number	LG722511323
Description	LABORATORY GROWN DIAMOND
Shape and Cutting Style	ROUND BRILLIANT
Measurements	7.35 - 7.44 X 4.46 MM
GRADING RESULTS	
Carat Weight	1.50 CARAT
Color Grade	D
Clarity Grade	VVS 1
Cut Grade	IDEAL

### ADDITIONAL GRADING INFORMATION

Polish	EXCELLENT
Symmetry	EXCELLENT
Fluorescence	NONE
Inscription(s)	 LG722511323

Comments: As Grown - No indication of post-growth treatment.  
This Laboratory Grown Diamond was created by High Pressure High Temperature (HPHT) growth process.  
Type II

## PROPORTIONS



Sample Image Used

**COLOR**

D E F G H I J Faint Very Light Light

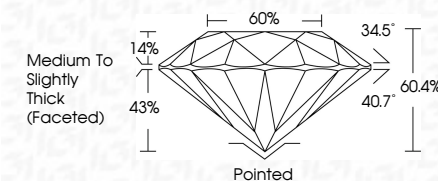
## CLARITY

IF	VS <sup>1-2</sup>	VS <sup>1-2</sup>	SI <sup>1-2</sup>	I <sup>1-3</sup>
Internally Flawless	Very Very Slightly Included	Very Slightly Included	Slightly Included	Included

## LABORATORY GROWN DIAMOND REPORT



July 12, 2025	
IGI Report Number	LG722511323
Description	LABORATORY GROWN DIAMOND
Shape and Cutting Style	ROUND BRILLIANT
Measurements	7.35 - 7.44 X 4.46 MM
GRADING RESULTS	
Carat Weight	1.50 CARAT
Color Grade	D
Clarity Grade	VVS 1
Cut Grade	IDEAL



### ADDITIONAL GRADING INFORMATION

Polish	EXCELLENT
Symmetry	EXCELLENT
Fluorescence	NONE
Inscription(s)	<del>(G)</del> LG722511323
Comments: As Grown - No indication of post-growth treatment.	
This Laboratory Grown Diamond was created by High Pressure High Temperature (HPHT) growth process.	
Type II	



IG



© IGI 2020, International Gemological Institute

FD - 10 20



THIS DOCUMENT WAS PRODUCED WITH THE FOLLOWING SECURITY MEASURES: SPECIAL DOCUMENT PAPER, INK SCREENS, WATERMARK, BACKGROUND DESIGNS, HOLOGRAM AND OTHER SECURITY FEATURES NOT LISTED AND DO EXCEED DOCUMENT SECURITY INDUSTRY GUIDELINES.

**www.igi.org**

July 12, 2025  
GJ Report No | G722511323

**GI Report No LG75**

7.35 - 7.44 X 4.46 MM

1.50 CARAT

**D**

Color Grade

Clarity Grade	WS 1
FLAWLESS	100%
INTERNAL FLAWLESS	100%
VERY, VERY SLIGHT	100%
VERY SLIGHT	100%
SLIGHT	100%
SLIGHT TO MODERATE	100%
MODERATE	100%
MODERATE TO HEAVY	100%
HEAVY	100%
HEAVY TO VERY HEAVY	100%
VERY HEAVY	100%
VERY HEAVY TO EXTREME	100%
EXTREME	100%

Cut Grade	IDEAL
Depth	60.4%

Table 60%

Girdle  
Medium To Slightly  
Thick (Faceted)

[illegible]

Polish	EXCELLENT
Czech	POOR

Symmetry	EXCELLENT
Clarity	NONE

Fluorescence	Inscription(s)	None
		151 LG72511323

1

Comments:  
As Grown - No indication of post-growth

This Laboratory Grown Diamond was created by LDC Process, LLC.

Created by High Pressure High Temperature (HPHT) growth process.

type II