



**ELECTRONIC COPY**

## LABORATORY GROWN DIAMOND REPORT

LG722517502  
Report verification at [igi.org](https://igi.org)

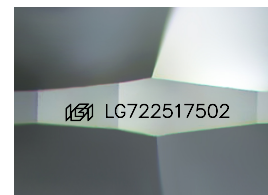
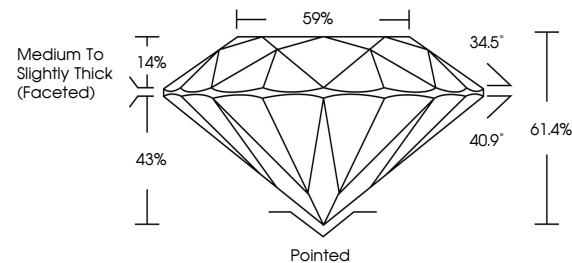
|                         |                          |
|-------------------------|--------------------------|
| July 10, 2025           |                          |
| IGI Report Number       | LG722517502              |
| Description             | LABORATORY GROWN DIAMOND |
| Shape and Cutting Style | ROUND BRILLIANT          |
| Measurements            | 8.41 - 8.44 X 5.17 MM    |
| GRADING RESULTS         |                          |
| Carat Weight            | 2.29 CARATS              |
| Color Grade             | D                        |
| Clarity Grade           | VVS 2                    |
| Cut Grade               | IDEAL                    |

### ADDITIONAL GRADING INFORMATION

|                |   |
|----------------|---|
| Polish         | EXCELLENT   |
| Symmetry       | EXCELLENT   |
| Fluorescence   | NONE  |
| Inscription(s) |  LG722517502 |

Comments: This Laboratory Grown Diamond was created by Chemical Vapor Deposition (CVD) growth process.  
Type IIa

## PROPORTIONS



Sample Image Used

**COLOR**

D E F G H I J Faint Very Light Light

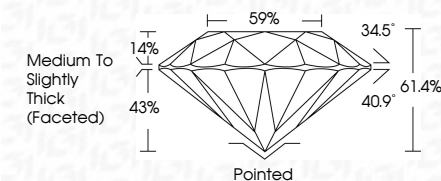
## CLARITY

| IF                  | VS <sup>1-2</sup>           | VS <sup>1-2</sup>      | SI <sup>1-2</sup> | I <sup>1-3</sup> |
|---------------------|-----------------------------|------------------------|-------------------|------------------|
| Internally Flawless | Very Very Slightly Included | Very Slightly Included | Slightly Included | Included         |

## LABORATORY GROWN DIAMOND REPORT



|                         |                          |
|-------------------------|--------------------------|
| July 10, 2025           |                          |
| IGI Report Number       | LG722517502              |
| Description             | LABORATORY GROWN DIAMOND |
| Shape and Cutting Style | ROUND BRILLIANT          |
| Measurements            | 8.41 - 8.44 X 5.17 MM    |
| GRADING RESULTS         |                          |
| Carat Weight            | 2.29 CARATS              |
| Color Grade             | D                        |
| Clarity Grade           | VVS 2                    |
| Cut Grade               | IDEAL                    |



### ADDITIONAL GRADING INFORMATION

|   |  |
|---|--|
| Polish  | EXCELLENT  |
| Symmetry  | EXCELLENT  |
| Fluorescence  | NONE   |
| Inscription(s)  |  LG722517502 |
| <p>Comments: This Laboratory Grown Diamond was created by Chemical Vapor Deposition (CVD) growth process.</p> <p>Type IIa</p> |  |



IG



© IGI 2020, International Gemological Institute

FD - 10 20



THIS DOCUMENT WAS PRODUCED WITH THE FOLLOWING SECURITY MEASURES: SPECIAL DOCUMENT PAPER, INK SCREENS, WATERMARK, BACKGROUND DESIGNS, HOLOGRAM AND OTHER SECURITY FEATURES NOT LISTED AND DO EXCEED DOCUMENT SECURITY INDUSTRY GUIDELINES

**www.igi.org**

July 10, 2025  
GJ Report No 1G722517502

IGI Report No LG72  
 POUND BRILLIANT

3.41 - 8.44 X 5.17 MM

3.41 - 8.44 X 5.17 MM  
2.29 CARATS

| Color Grade | D |
|-------------|---|
|-------------|---|

| Clarity Grade | WS 2 |
|---------------|------|
| Very Good     | 100% |
| Good          | 100% |
| Fair          | 100% |
| Poor          | 100% |
| Very Poor     | 100% |

| Color     | Clarity  | Cut Grade | IDEAL  |
|-----------|----------|-----------|--------|
| Colorless | Flawless | Excellent | 41.40% |

|       |       |
|-------|-------|
| Depth | 61.4% |
| Table | 59%   |

Girdle  
Medium To Slightly  
Thick (Feet)

Thick (Faceted)

|        |           |
|--------|-----------|
| Culet  | Pointed   |
| Polish | EXCELLENT |

Symmetry

| Fluorescence      | NONE |
|-------------------|------|
| 1681   G722517502 |      |

03/10/2017 16:08

**Comments:**  
This Laboratory Grown Diamond was

created by Chemical Vapor Deposition (CVD) growth process.

Type IIa