



**ELECTRONIC COPY**

## LABORATORY GROWN DIAMOND REPORT

LG722518524  
Report verification at [igi.org](https://igi.org)

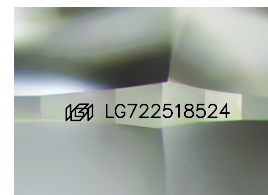
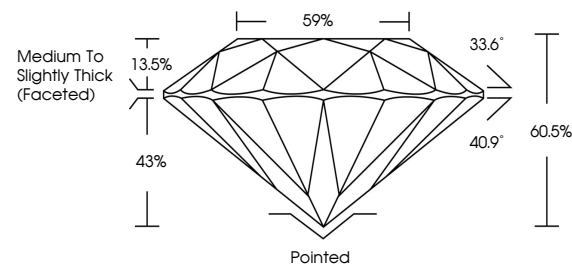
July 12, 2025	
IGI Report Number	LG722518524
Description	LABORATORY GROWN DIAMOND
Shape and Cutting Style	ROUND BRILLIANT
Measurements	7.52 - 7.55 X 4.56 MM
GRADING RESULTS	
Carat Weight	1.59 CARAT
Color Grade	D
Clarity Grade	VVS 1
Cut Grade	IDEAL

### ADDITIONAL GRADING INFORMATION

Polish	EXCELLENT
Symmetry	EXCELLENT
Fluorescence	NONE
Inscription(s)	151 LG722518524

Comments: As Grown - No indication of post-growth treatment.  
This Laboratory Grown Diamond was created by High Pressure High Temperature (HPHT) growth process.  
Type II

## PROPORTIONS



Sample Image Used

COLOR

D E F G H I J Faint Very Light Light

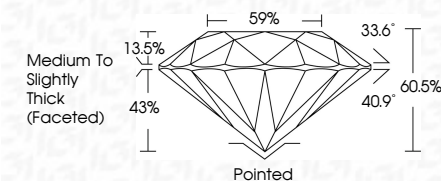
## CLARITY

IF	VS <sup>1-2</sup>	VS <sup>1-2</sup>	SI <sup>1-2</sup>	I <sup>1-3</sup>
Internally Flawless	Very Very Slightly Included	Very Slightly Included	Slightly Included	Included

## LABORATORY GROWN DIAMOND REPORT



July 12, 2025	
IGI Report Number	LG722518524
Description	LABORATORY GROWN DIAMOND
Shape and Cutting Style	ROUND BRILLIANT
Measurements	7.52 - 7.55 X 4.56 MM
GRADING RESULTS	
Carat Weight	1.59 CARAT
Color Grade	D
Clarity Grade	VVS1
Cut Grade	IDEAL



### ADDITIONAL GRADING INFORMATION

Polish	EXCELLENT
Symmetry	EXCELLENT
Fluorescence	NONE
Inscription(s)	<del>(G)</del> LG722518524
Comments: As Grown - No indication of post-growth treatment.	
This Laboratory Grown Diamond was created by High Pressure High Temperature (HPHT) growth process.	
Type II	



© IGI 2020, International Gemological Institute

FD - 10 20



THIS DOCUMENT WAS PRODUCED WITH THE FOLLOWING SECURITY MEASURES: SPECIAL DOCUMENT PAPER, INK SCREENS, WATERMARK, BACKGROUND DESIGNS, HOLOGRAM, AND OTHER SECURITY FEATURES NOT LISTED AND DO EXCEED DOCUMENT SECURITY INDUSTRY GUIDELINES.

**www.igi.org**

July 12, 2025  
GI Report No LG72518524  
ROUND BRILLIANT

7.52 - 7.55 X 4.56 MM

1.52 x 7.50 x 4.50 mm  
Carat Weight  
1.59 CARAT

**Color Grade**

Clarity Grade	WS 1	IDEAL
Out Grade		

Out Grade	IDEAL
Depth	60.5%

Table	59%
-------	-----

Circle ☐ Medium To Slightly Thick (Faceted)

	Pointed	Culet
11 mm (4 carats)		

Polish	EXCELLENT
Cure	FULLY

Symmetry	EXCELLENT
Fluorescence	NONE

Fluorescence	NONE
Inscription(s)	151 LG72518524

Comments:

Comments:  
As Grown - No Indication of post-growth  
treatment

This Laboratory Grown Diamond was created by High Pressure High

Created by High Pressure High Temperature (HPHT) growth process.

type II