



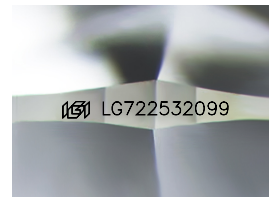
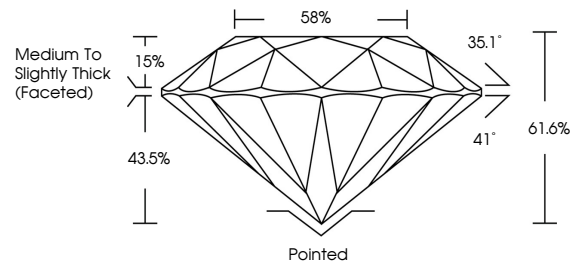
**INTERNATIONAL
GEMOLOGICAL
INSTITUTE**

ELECTRONIC COPY

LABORATORY GROWN DIAMOND REPORT

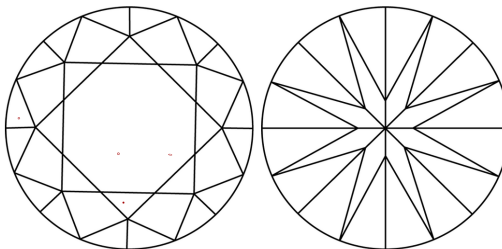
LG722532099
Report verification at igi.org

PROPORTIONS



Sample Image Used

CLARITY CHARACTERISTICS



KEY TO SYMBOLS

Red symbols indicate internal characteristics.
Green symbols indicate external characteristics.

COLOR

D E F G H I J Faint Very Light Light

CLARITY

IF WS¹⁻² VS¹⁻² SI¹⁻² |¹⁻³

Internally Flawless	Very Very Slightly Included	Very Slightly Included	Slightly Included	Included
------------------------	--------------------------------	---------------------------	----------------------	----------



July 14, 2025

IGI Report Number **LG722532099**

Description	LABORATORY GROWN DIAMOND
-------------	--------------------------

Shape and Cutting Style **ROUND BRILLIANT**

Measurements 9.29 - 9.33 X 5.74 MM

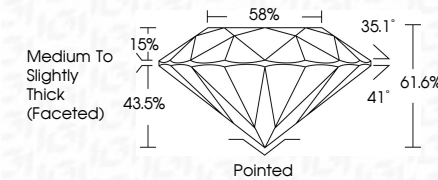
GRADING RESULTS

Carat Weight **3.03 CARATS**

Color Grade	E
-------------	---

Clarity Grade VS 1

Cut Grade **IDEAL**



ADDITIONAL GRADING INFORMATION

Polish **EXCELLENCE**Symmetry **EXCELLENCE**

Fluorescence NONI

Inscription(s) LG72253209

Comments: This Laboratory Grown Diamond was created by Chemical Vapor Deposition (CVD) growth process.
Type IIa



IG



© IGI 2020, International Gemological Institute

FD - 10 20

www.igi.org

THIS DOCUMENT WAS PRODUCED WITH THE FOLLOWING SECURITY MEASURES: SPECIAL DOCUMENT PAPER, INK SCREENS, WATERMARK, BATHOPHONY AND DESKTOP LOCKS, SOUND AND OTHER SECURITY FEATURES, A 10-STAR, AND DO NOT DISCLOSE TO ANYONE WITHOUT YOUR SUPERVISOR'S PERMISSION.

July 14, 2025
GI Report No LG72532099
ROUND BRILLIANT

2.29 - 9.33 X 5.74 MM	3.03 CARATS	
Carat Weight	VS 1	Pointed
Color Grade	IDEAL	EXCELLENT
Clarity Grade	61.6%	EXCEL
Depth	56%	NONE
Table	Medium to slightly Thick (faceted)	None
Girdle		None
Culet		None
Polish		None
Symmetry		None
Fluorescence		None

Comments:
This Laboratory Grown Diamond was
created by Chemical Vapor Deposition
(CVD) growth process.