

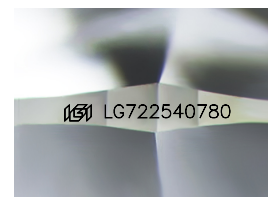
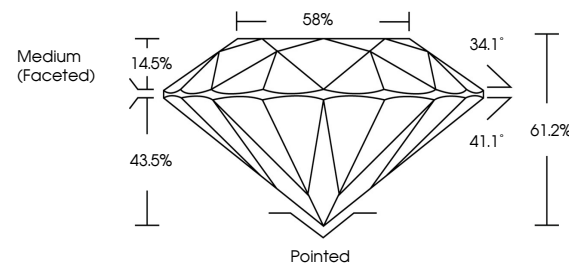


ELECTRONIC COPY

LABORATORY GROWN DIAMOND REPORT

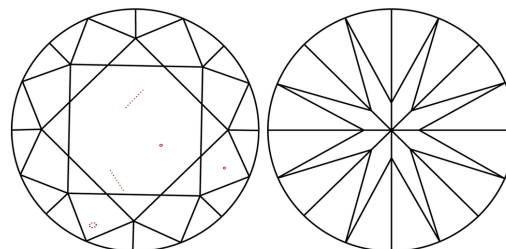
LG722540780
Report verification at igi.org

PROPORTIONS



Sample Image Used

CLARITY CHARACTERISTICS



KEY TO SYMBOLS

Red symbols indicate internal characteristics.
Green symbols indicate external characteristics.

COLOR

D E F G H I J Faint Very Light Light

CLARITY

IF VS¹⁻² VS¹⁻² S¹⁻² |¹⁻³

Internally Flawless	Very Very Slightly Included	Very Slightly Included	Slightly Included	Included
------------------------	--------------------------------	---------------------------	----------------------	----------

LABORATORY GROWN DIAMOND REPORT



July 16, 2025

IGI Report Number **LG722540780**

Description	LABORATORY GROWN DIAMOND
-------------	--------------------------

Shape and Cutting Style **ROUND BRILLIANT**

Measurements 8.18 - 8.21 X 5.01 MM

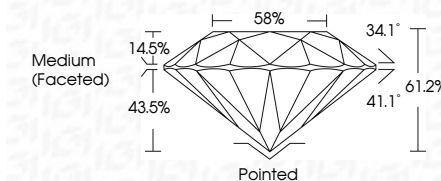
GRADING RESULTS

Carat Weight **2.04 CARATS**

Color Grade **E**

Clarity Grade VS 1

Cut Grade **IDEAL**



ADDITIONAL GRADING INFORMATION

Polish **EXCELLENT**Symmetry **EXCELLENT**Fluorescence **NONE**Inscription(s) LG722540780

Comments: This Laboratory Grown Diamond was created by Chemical Vapor Deposition (CVD) growth process.

Type IIa



JULY 16, 2025 GI Report No. G72540780 ROUND BRILLIANT 18 - 19 x 12.1 x 5.01 MM	Carat Weight Color Grade Clarity Grade Cut Grade Depth Table Girdle	2.04 CARATS E VS 1 IDEAL 61.2% 59% Medium (Faced)	Pointed EXCELLENT EXCELLENT NONE #91672540780	Culet Polish Symmetry Fluorescence Inscription(s)	Comments: This Laboratory Grown Diamond was created by Chemical Vapor Deposition (CVD) growth process. Type IIA
---	---	---	---	---	---



THIS DOCUMENT WAS PRODUCED WITH THE FOLLOWING SECURITY MEASURES: SPECIAL DOCUMENT PAPER, INK SCREENS, WATERMARK, BACKGROUND DESIGNS, HOLOGRAM AND OTHER SECURITY FEATURES NOT LISTED AND DO EXCEED DOCUMENT SECURITY INDUSTRY GUIDELINE