



ELECTRONIC COPY

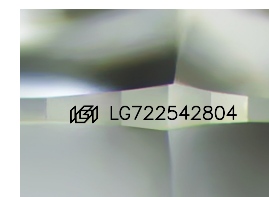
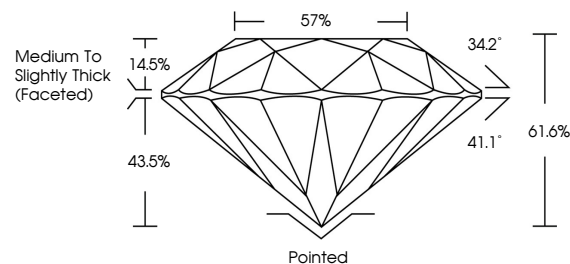
LG722542804 Report verification at igi.org



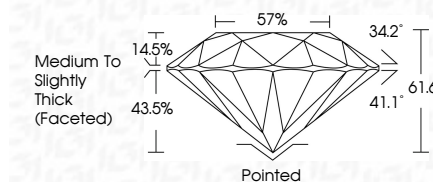
July 16, 2025 IGI Report Number LG722542804 Description LABORATORY GROWN DIAMOND Shape and Cutting Style ROUND BRILLIANT Measurements 7.48 - 7.51 X 4.62 MM GRADING RESULTS Carat Weight 1.59 CARAT Color Grade D Clarity Grade INTERNALLY FLAWLESS Cut Grade IDEAL

July 16, 2025 IGI Report Number LG722542804 Description LABORATORY GROWN DIAMOND Shape and Cutting Style ROUND BRILLIANT Measurements 7.48 - 7.51 X 4.62 MM GRADING RESULTS Carat Weight 1.59 CARAT Color Grade D Clarity Grade INTERNALLY FLAWLESS Cut Grade IDEAL

PROPORTIONS



Sample Image Used



ADDITIONAL GRADING INFORMATION

Polish EXCELLENT Symmetry EXCELLENT Fluorescence NONE Inscription(s) IGI LG722542804

Comments: As Grown - No indication of post-growth treatment. This Laboratory Grown Diamond was created by High Pressure High Temperature (HPHT) growth process. Type II

COLOR

D E F G H I J Faint Very Light Light

CLARITY

IF VS 1-2 VS 1-2 SI 1-2 I 1-3 Internally Flawless Very Very Slightly Included Very Slightly Included Slightly Included Included

ADDITIONAL GRADING INFORMATION

Polish EXCELLENT Symmetry EXCELLENT Fluorescence NONE Inscription(s) IGI LG722542804 Comments: As Grown - No indication of post-growth treatment. This Laboratory Grown Diamond was created by High Pressure High Temperature (HPHT) growth process. Type II



IGI



July 16, 2025 IGI Report No LG722542804 ROUND BRILLIANT 7.48 - 7.51 X 4.62 MM 1.59 CARAT D Color Grade D IF Clarity Grade IDEAL 61.6% Depth 57% Table Medium To Slightly Thick (Faceted) Pointed EXCELLENT Polished EXCELLENT Symmetry EXCELLENT Fluorescence NONE Inscriptions(s) IGI LG722542804 Comments: As Grown - No indication of post-growth treatment. This Laboratory Grown Diamond was created by High Pressure High Temperature (HPHT) growth process. Type II