

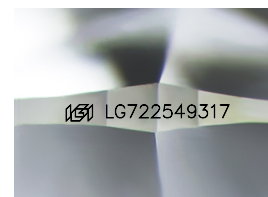
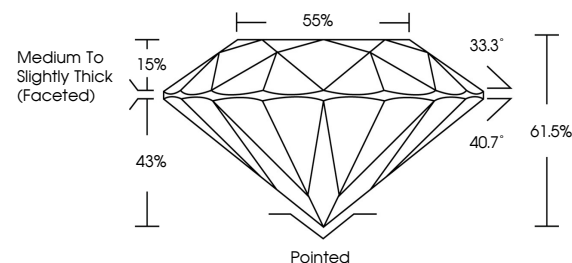


ELECTRONIC COPY

LABORATORY GROWN DIAMOND REPORT

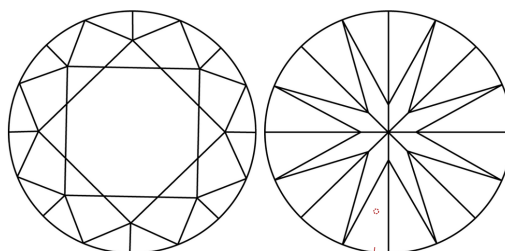
LG722549317
Report verification at igi.org

PROPORTIONS



Sample Image Used

CLARITY CHARACTERISTICS



KEY TO SYMBOLS

Red symbols indicate internal characteristics.
Green symbols indicate external characteristics.

COLOR

D E F G H I J Faint Very Light Light

CLARITY

IF WS¹⁻² VS¹⁻² SI¹⁻² |¹⁻³

Internally Flawless	Very Very Slightly Included	Very Slightly Included	Slightly Included	Included
------------------------	--------------------------------	---------------------------	----------------------	----------



© IGI 2020, International Gemological Institute

FD - 10 20

www.igi.org

LABORATORY GROWN DIAMOND REPORT



July 12, 2025

IGI Report Number **LG722549317**Description **LABORATORY GROWN DIAMOND**Shape and Cutting Style **ROUND BRILLIANT**

Measurements 8.16 - 8.19 X 5.03 MM

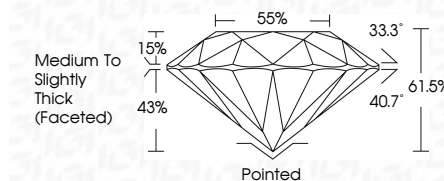
GRADING RESULTS

Carat Weight **2.06 CARATS**

Color Grade D

Clarity Grade WS 1

Cut Grade **IDEAL**



ADDITIONAL GRADING INFORMATION

Polish **EXCELLENT**

Symmetry **EXCELLENT**

Fluorescence **NONE**Inscription(s) LG722549317

Comments: As Grown - No indication of post-growth treatment.

This Laboratory Grown Diamond was created by High Pressure High Temperature (HPHT) growth process.

Type II



JULY 12, 2026
Gf Report No LG72S6937
SOUND BRILLIANT
ROUND CUT 18 - 8.19 X 6.03 MM
Carat Weight
Color Grade
D
VVS 1
IDEAL
61.5%
85%
Medium To Slightly Thick Faceted)
Patched EXCELLENT EXCELLENT NONE
(#) L672S6937
Comments: As Given - No Indication of post-growth treatment. This Laboratory Growth Diamond was created by High Pressure High Temperature (HPHT) growth process.
Type II