



ELECTRONIC COPY

LABORATORY GROWN DIAMOND REPORT

LG722552333
Report verification at igi.org

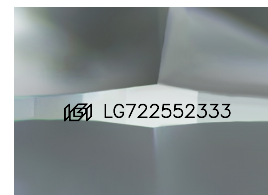
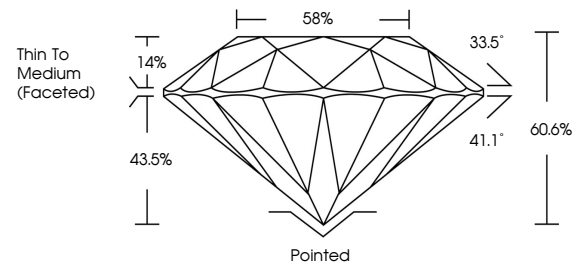
July 12, 2025	
IGI Report Number	LG722552333
Description	LABORATORY GROWN DIAMOND
Shape and Cutting Style	ROUND BRILLIANT
Measurements	6.96 - 6.99 X 4.23 MM
GRADING RESULTS	
Carat Weight	1.24 CARAT
Color Grade	D
Clarity Grade	VVS 2
Cut Grade	IDEAL

ADDITIONAL GRADING INFORMATION

Polish	EXCELLENT
Symmetry	EXCELLENT
Fluorescence	NONE
Inscription(s)	151 LG722552333

Comments: This Laboratory Grown Diamond was created by Chemical Vapor Deposition (CVD) growth process.
Type IIa

PROPORTIONS



Sample Image Used

COLOR

D E F G H I J Faint Very Light Light

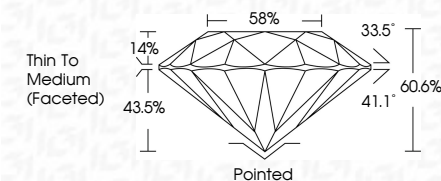
CLARITY

IF	VS ¹⁻²	VS ¹⁻²	SI ¹⁻²	I ¹⁻³
Internally Flawless	Very Very Slightly Included	Very Slightly Included	Slightly Included	Included

LABORATORY GROWN DIAMOND REPORT



July 12, 2025	
IGI Report Number	LG722552333
Description	LABORATORY GROWN DIAMOND
Shape and Cutting Style	ROUND BRILLIANT
Measurements	6.96 - 6.99 X 4.23 MM
GRADING RESULTS	
Carat Weight	1.24 CARAT
Color Grade	D
Clarity Grade	VVS 2
Cut Grade	IDEAL



ADDITIONAL GRADING INFORMATION

Polish	EXCELLENT
Symmetry	EXCELLENT
Fluorescence	NONE
Inscription(s)	 LG722552333
Comments: This Laboratory Grown Diamond was created by Chemical Vapor Deposition (CVD) growth process.	
Type IIa	



© IGI 2020, International Gemological Institute

FD - 10 20



THIS DOCUMENT WAS PRODUCED WITH THE FOLLOWING SECURITY MEASURES: SPECIAL DOCUMENT PAPER, INK SCREENS, WATERMARK, BACKGROUND DESIGNS, HOLOGRAM AND OTHER SECURITY FEATURES NOT LISTED AND DO EXCEED DOCUMENT SECURITY INDUSTRY GUIDELINES

www.igi.org

July 12, 2025
GJ Report No | G722552333

IGI Report No LG72
POUND BRILLIANT

5.96 - 6.99 X 4.23 MM

3.96 - 6.99 X 4.23 MM
1.24 CARAT

Color Grade D

Clarity Grade	WS 2
---------------	------

	Very Good	Good	Fair	Poor	Very Poor	IDEAL
Cut Grade						

Depth	80.6%
Table	58%

Girdle

(Faceted)

	Pointed	EXCELLENT
Culet		
Polish		

Symmetry

Fluorescence	NONE
468 G722552832	

[illegible]

Comments:
This Laboratory Grown Diamond was

created by Chemical Vapor Deposition (CVD) growth process.

Type IIa