



ELECTRONIC COPY

LABORATORY GROWN DIAMOND REPORT

LG722552334
Report verification at igi.org

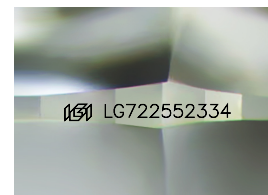
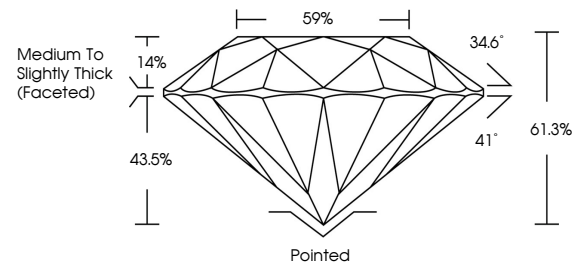
July 12, 2025	
IGI Report Number	LG722552334
Description	LABORATORY GROWN DIAMOND
Shape and Cutting Style	ROUND BRILLIANT
Measurements	7.12 - 7.14 X 4.37 MM
GRADING RESULTS	
Carat Weight	1.37 CARAT
Color Grade	E
Clarity Grade	VS 1
Cut Grade	IDEAL

ADDITIONAL GRADING INFORMATION

Polish	EXCELLENT
Symmetry	EXCELLENT
Fluorescence	NONE
Inscription(s)	 LG722552334

Comments: This Laboratory Grown Diamond was created by Chemical Vapor Deposition (CVD) growth process.
Type IIa

PROPORTIONS



Sample Image Used

COLOR

D E F G H I J Faint Very Light Light

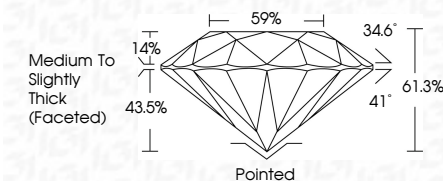
CLARITY

IF	VS ¹⁻²	VS ¹⁻²	SI ¹⁻²	I ¹⁻³
Internally Flawless	Very Very Slightly Included	Very Slightly Included	Slightly Included	Included

LABORATORY GROWN DIAMOND REPORT



July 12, 2025	
IGI Report Number	LG722552334
Description	LABORATORY GROWN DIAMOND
Shape and Cutting Style	ROUND BRILLIANT
Measurements	7.12 - 7.14 X 4.37 MM
GRADING RESULTS	
Carat Weight	1.37 CARAT
Color Grade	E
Clarity Grade	VS 1
Cut Grade	IDEAL



ADDITIONAL GRADING INFORMATION

Polish	EXCELLENT
Symmetry	EXCELLENT
Fluorescence	NONE
Inscription(s)	 LG722552334
<p>Comments: This Laboratory Grown Diamond was created by Chemical Vapor Deposition (CVD) growth process.</p> <p>Type IIa</p>	



© IGI 2020, International Gemological Institute

FD - 10 20



THIS DOCUMENT WAS PRODUCED WITH THE FOLLOWING SECURITY MEASURES: SPECIAL DOCUMENT PAPER, INK SCREENS, WATERMARK, BACKGROUND DESIGNS, HOLOGRAM AND OTHER SECURITY FEATURES NOT LISTED AND DO EXCEED DOCUMENT SECURITY INDUSTRY GUIDELINES

www.igi.org

July 12, 2025
GJ Report No | G722552334

Report No 16772562334	1.37 CARAT E
ROUND BRILLIANT	VSI IDEAL 61.3% 59%
7.12 - 7.14 X 4.37 MM	Medium to Slightly Thick (Faceted)
Carat Weight	Polished
Color Grade	EXCELLENT
Clarity Grade	EXCELLENT
Our Grade	NONE
Depth	Color (Comments)
Table	
Girdle	
Culet	
Polish	
Symmetry	
Fluorescence	

Comments:
This Laboratory Grown Diamond was created by Chemical Vapor Deposition (CVD) growth process.